

FOR SALE OR LEASE



SINGLE STORY, MEDICAL OR DENTAL OFFICE BUILDING LOCATED IN PLACERVILLE, CA



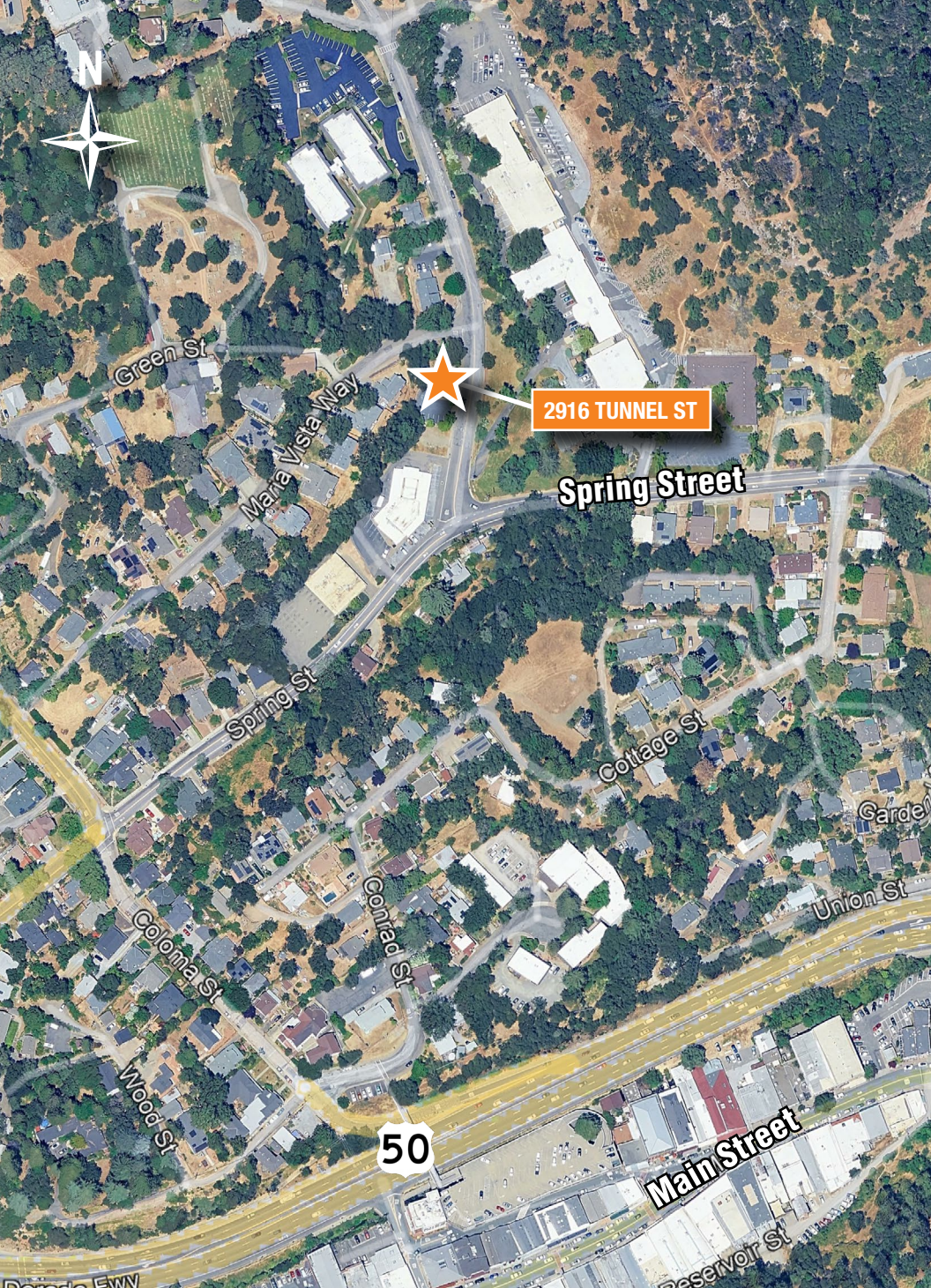
**OSBORNE
GROUP**

Robb Osborne
Executive Vice President
DRE #01398696
(916) 784-2700
rosborne@gallire.com

Brandon Sessions
Senior Vice President
DRE #01914432
(916) 789-3339
bsessions@gallire.com

Kannon Kuhn
Associate Vice President
DRE #02079314
(916) 789-3333
kkuhn@gallire.com

**2916 Tunnel Street
Placerville, CA 95667**



PROPERTY HIGHLIGHTS

- $\pm 1,300$ SF Freestanding building for sale or lease – currently build out dental office
- Lot Size: ± 0.25 Acres
- Build out: large open area with four (4) patient exam spaces with sinks, one (1) private offices, reception/waiting area, restroom, and storage room
- The building has attractive stone veneers, large window line surrounding the building, and a dedicated off-street parking lot
- Located near intersection of Spring Street and Tunnel Street
- Located within a desirable community with complementary medical and office uses and a well-established residential community
- Short distance to historic downtown Placerville
- For Sale or Lease - inquire with listing agent for sales price.

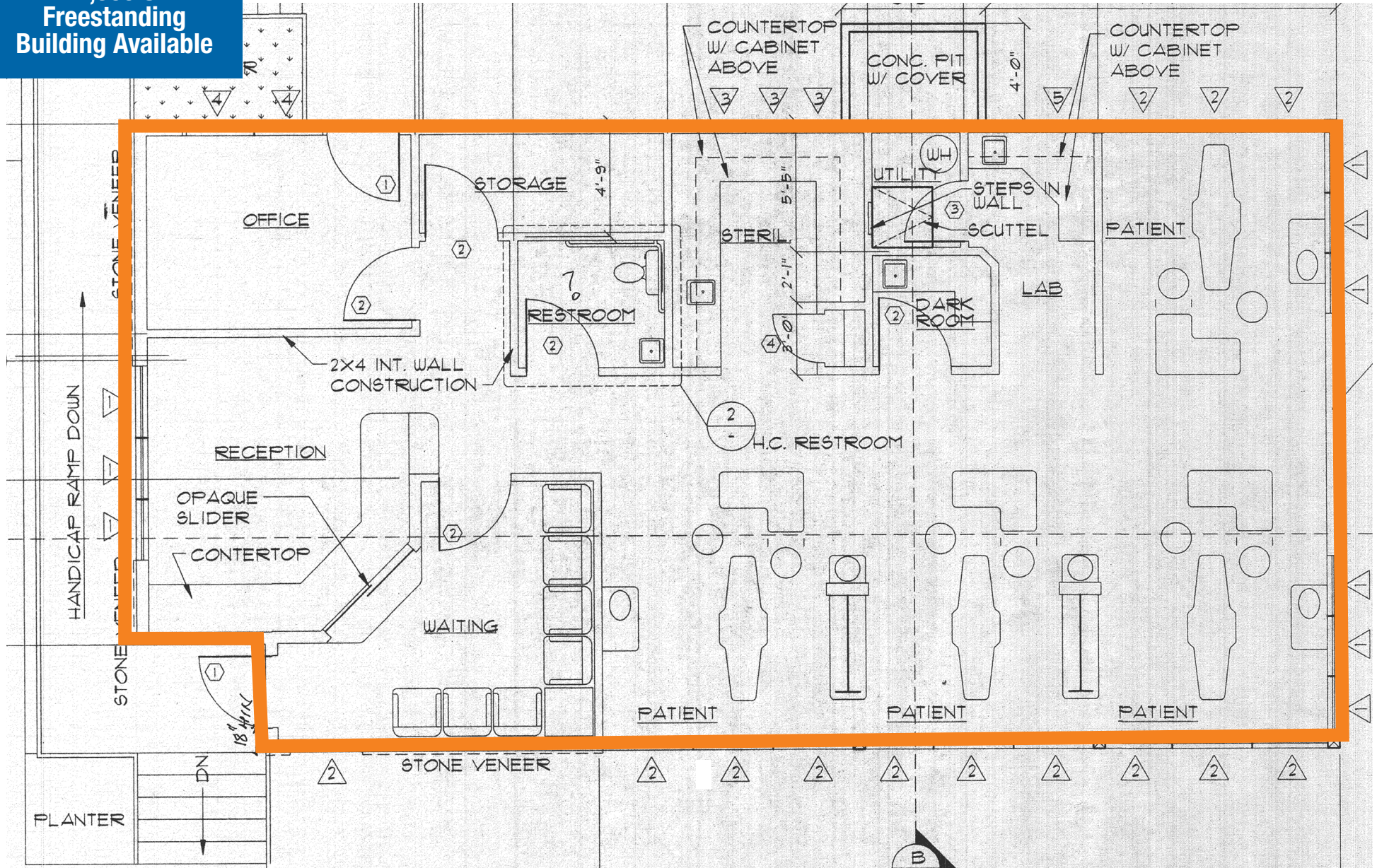
LEASE RATE: \$1.75/SF NNN



▶ CLICK TO WATCH WALKTHROUGH

FLOOR PLAN

±1,300 SF
Freestanding
Building Available



DEMOGRAPHICS

MARKET OVERVIEW

2916 Tunnel Street
Placerville, Ca 95667

3 MILE RADIUS



KEY FACTS

18,537

Population

47

Median Age



2.28

Average Household Size

\$84,358

Median Household Income

HOUSING STATS



\$451,055

Median Home Value



8,001

Households



37.25%

% Renter Occupied
Housing Units

COMMUTERS



0.76%

Used Public Transportation



83.73%

Drove Alone to Work

EDUCATION



23.28%

High
School Graduate



18.14%

Some
College



19.49%

Bachelor's
Degree Plus

BUSINESS



14,217

Total Employees

EMPLOYMENT



57.07%

White Collar



42.93%

Blue Collar

PROPERTY AERIAL



PLACERVILLE SENIOR CENTER

2916 TUNNEL ST

SAVE MART
SUPERMARKETS

WELLS
FARGO

TACO BELL



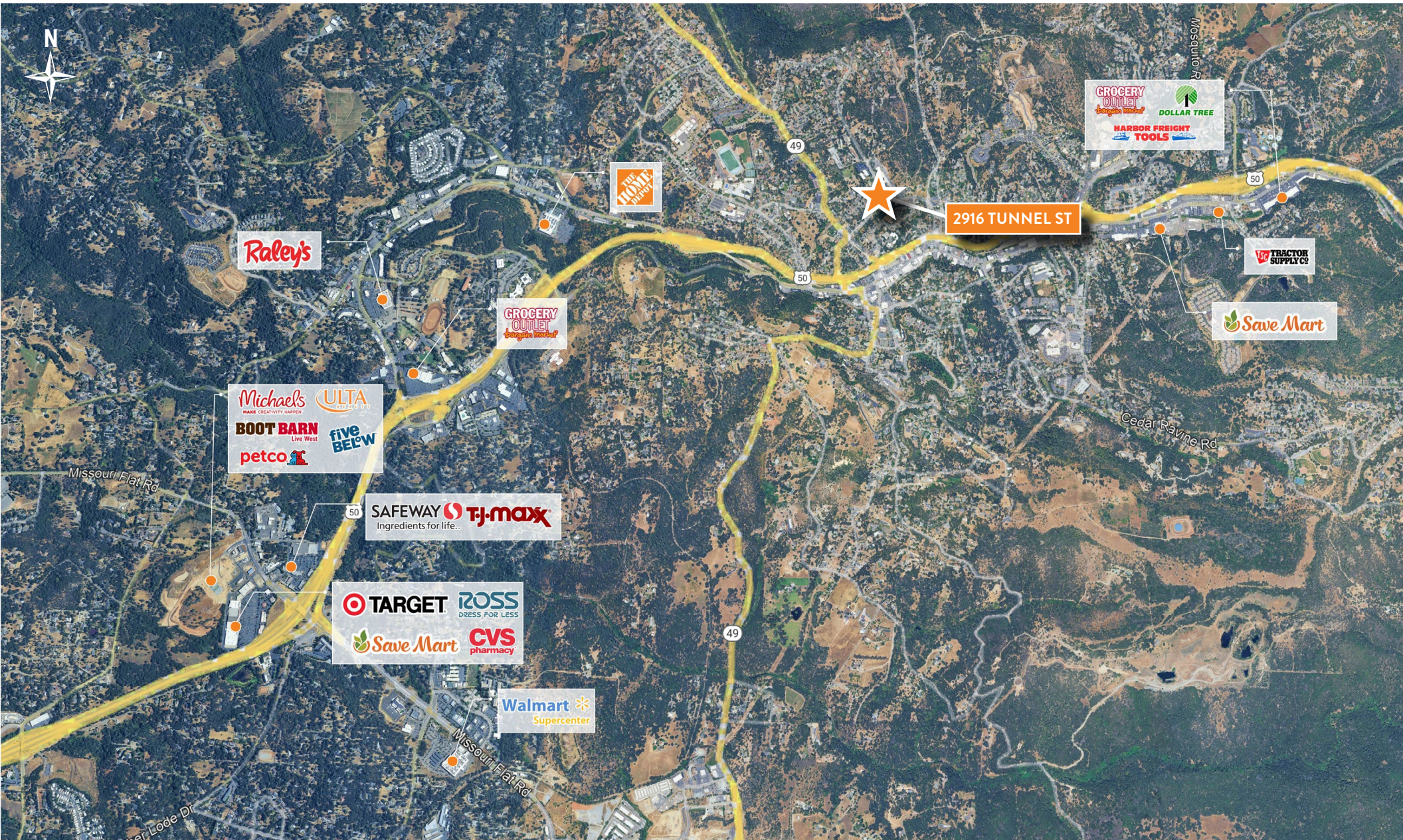
DOWNTOWN PLACERVILLE

Bank of America



Sourdough's Co

PLACERVILLE RETAIL AERIAL



PROPERTY IMAGES





Robb Osborne
Executive Vice President
DRE #01398696
(916) 784-2700
rosborne@gallellire.com

Brandon Sessions
Senior Vice President
DRE #01914432
(916) 789-3339
bsessions@gallellire.com

Kannon Kuhn
Associate Vice President
DRE #02079314
(916) 789-3333
kkuhn@gallellire.com



2916 Tunnel Street

Placerville, CA 95667

**AVAILABLE FOR SALE OR LEASE
- MEDICAL OR DENTAL OFFICE -**