

FEATHER RIVER SHOPPING CENTER

SWQ of Feather River Blvd & N. Beale Rd along HWY 70, Marysville, CA



COSTCO - NOW OPEN

MATT GOLDSTEIN
Vice President
CA DRE #01886233
mgoldstein@gallellire.com

AMAN BAINS
Associate Vice President
CA DRE #02101492
abains@gallellire.com

HILBERS
INCORPORATED
CONTRACTORS & ENGINEERS

GALLELLI
REAL ESTATE

GALLELLI REAL ESTATE
(916) 772-1700
www.GallellIRE.com



SEE YOURSELF HERE.

Feather River Shopping Center is conveniently located in the heart of Yuba County at SWQ of Feather River Blvd & N. Beale Rd along HWY 70, Marysville, CA 95901. The center will be delivering consumers with a regional shopping hub complete with many national retailers. The 405,450 square foot center has direct exposure to 1,750' of Highway 70 and its 50,000 daily travelers. Feather River Shopping Center offers:

- The best in class retail anchor, Costco Wholesale!
- Yuba County has committed to a significant capital injection to improve the local corridor via the Yuba County Community Development & Services Agency, Board of Supervisors and Community Development Block Grant. The revitalization will improve storefronts, roadways, sidewalks and infrastructure.
- Multiple Highway 70 on and off ramps to help provide a better customer experience.
- In addition to Yuba City and Marysville, the center will pull consumers regionally from towns such as Colusa, Sutter, Live Oak, Browns Valley, Penn Valley, Wheatland, Plumas Lake. This regional draw is estimated to encompass a population of approximately 200,000.

SQUARE FEET

±405,450

NOTABLE TENANTS

COSTCO, FOODMAXX, WENDY'S

GET TO KNOW
YOUR NEIGHBORS.





Feather River Shopping Center aligns with the most predominantly used path of travel for Yuba College that enrolls 5,175 students, Beale Air Force Base with a population of 1,303, and Peach Tree Country Club which has a large amount of members and employees.

IMPROVEMENTS

The county of Yuba has announced that the revitalization of Lindhurst Avenue Corridor is still a top priority as it has been for the last 9 months. The results of this beautification include: the funding of engineering and design of sidewalks, bike lanes, street paving, landscaping, lighting and transit enhancements. Additionally, property grants were awarded to business owners on the corridor to make improvements to their existing businesses. With additional grants awarded to do general clean up of the corridor including trash and graffiti removal and drainage improvements to completed by May of 2023. The county is also cracking down on code enforcement to help maintain the preservation of progress and further the aesthetics of the corridor.

LOCATION

Yuba County benefits from a strong presence of market leaders from varying economic sectors making it a dynamic trade area. The local economy is diversified while providing The diversified such as:

- Municipal – Yuba County is business friendly and welcome new development.
- Armed Forces – Established in the 1940s and once home to the SR-71, there approximately 1,300 personnel currently living on base which is directly east on N. Beale Rd 7.5 miles.
- Entertainment – Feather River Shopping Center will complement the Hard Rock Hotel & Casino who chose Yuba County in 2019 for their 300,000 square foot resort which includes a 169 room hotel, 14,000 square foot casino floor and a 10,000 square foot event center.
- Agriculture – In 2021 Yuba County’s agricultural production was valued at approximately \$278M which is an increase of 29% from 2020. The two leading commodities are Rice (\$100M) and Walnuts (\$55M).
- Medical – The only hospital in Yuba County is Adventist Health Rideout is located less than 2 miles from the Feather River Shopping Center. This medical facility has more than 2,400 staff members.
- Music / Arts – Toyota Amphitheater is the regions only large scale outdoor concert venue which regularly holds events with nationally recognized performers. The venue has a capacity of 18,500.



Walmart
Supercenter

BURGER KING

ARCO
ampm

TACO BELL

POPEYES

Pizza Hut

Wendy's
(Under Construction)

Domino's

DOLLAR TREE

Papa Murphy's
TAKE 'N BAKE PIZZA

O'Reilly
AUTO PARTS

EASY FREEWAY ACCESS

N BEALE RD

22,953 ADT

CALIFORNIA
70

COSTCO
WHOLESALE

Tires LES SCHWAB

LINDHURST AVE

foodmaxx

53,363 ADT

SCALES AVE



TRADE AREA & DEMOGRAPHICS



	1-Mile	3-Mile	5-Mile	7-Mile
 2023 Total Population	7,115	66,386	125,174	135,241
 2023 Daytime Population	6,740	63,053	117,621	127,498
 2023 Total Employees	1,745	22,680	41,099	44,237
 2023 Total Households	2,169	21,893	41,116	44,603
 2023 Average Household Income	\$56,123	\$70,777	\$81,457	\$85,449
			HW 70	N. Beale at Lindhurst
 Traffic Counts			53,363	22,953

SITE PLAN & LEASING

FEATHER RIVER SHOPPING CENTER

SWQ OF FEATHER RIVER BLVD & N. BEALE RD ALONG HWY 70, MARYSVILLE, CA



SUITE	TENANT	SQUARE FEET
Major 1	Costco	160,000
Major 2	FoodMaxx	76,000
Mid Major 1	AVAILABLE (Divisible)	8,500
Mid Major 2	AVAILABLE (Divisible)	22,500
Mid Major 3	AVAILABLE (Divisible)	22,600
PAD 1	AVAILABLE	3,000
PAD 2	Wendy's (Under Construction)	3,000
PAD 3	AVAILABLE	3,000
PAD 4	AVAILABLE (Divisible)	7,000
PAD 5	AVAILABLE	9,000
PAD 6	AVAILABLE	3,100
PAD 7	AVAILABLE	3,000
PAD 8	AVAILABLE (Divisible)	8,400
PAD 9	AVAILABLE (Divisible)	47,000
PAD 10	AVAILABLE	4,000
Shop Space	AVAILABLE (Divisible)	19,500



GALLELLI RETAIL TEAM

MATT GOLDSTEIN
Vice President
CA DRE #01886233
mgoldstein@galllire.com

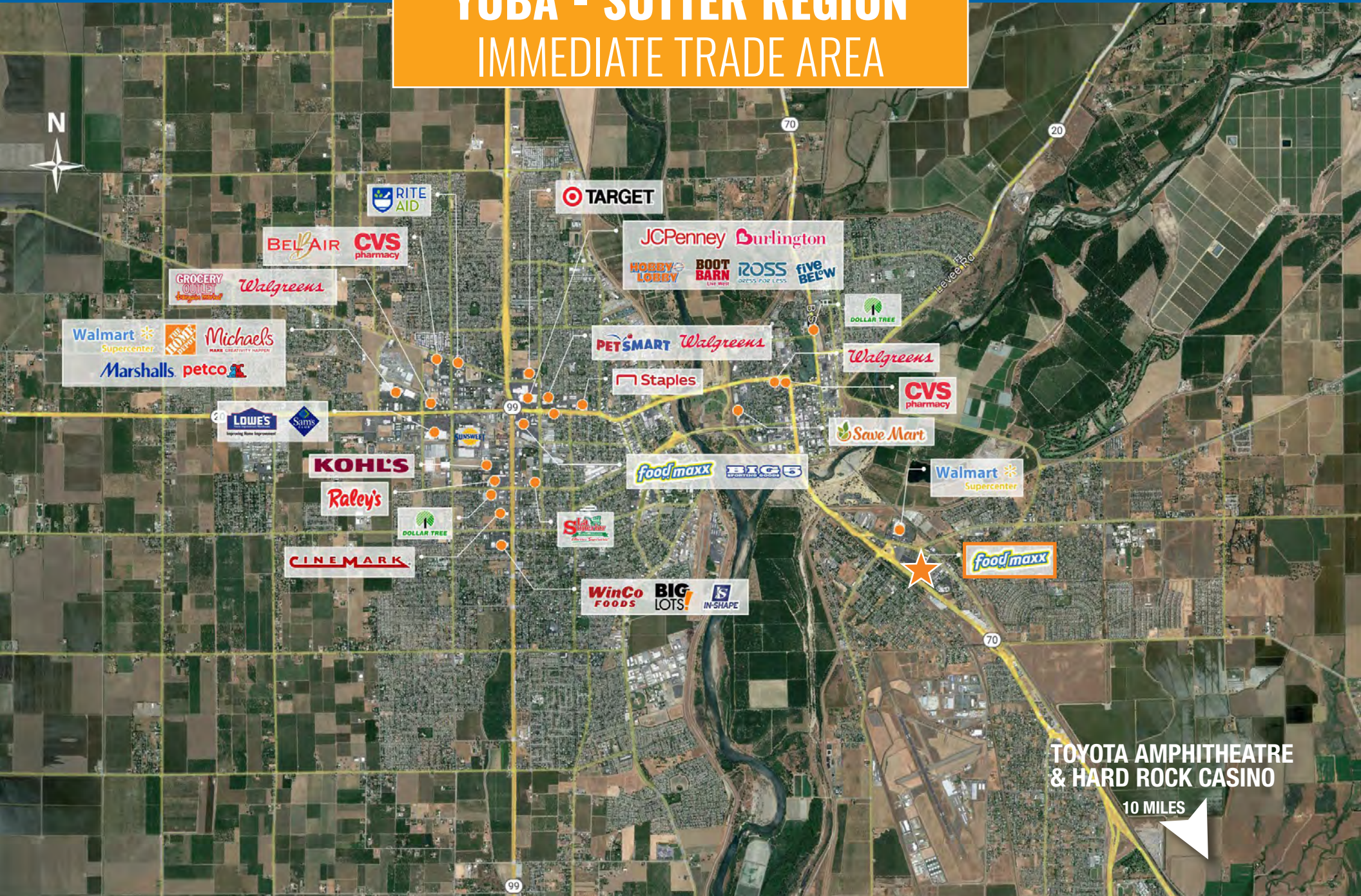
AMAN BAINS
Associate Vice President
CA DRE #02101492
abains@galllire.com

CONTACT US

GALLELLI REAL ESTATE
3005 Douglas Boulevard, Suite 200
Roseville, CA 95661
(916) 772-1700 | galllire.com



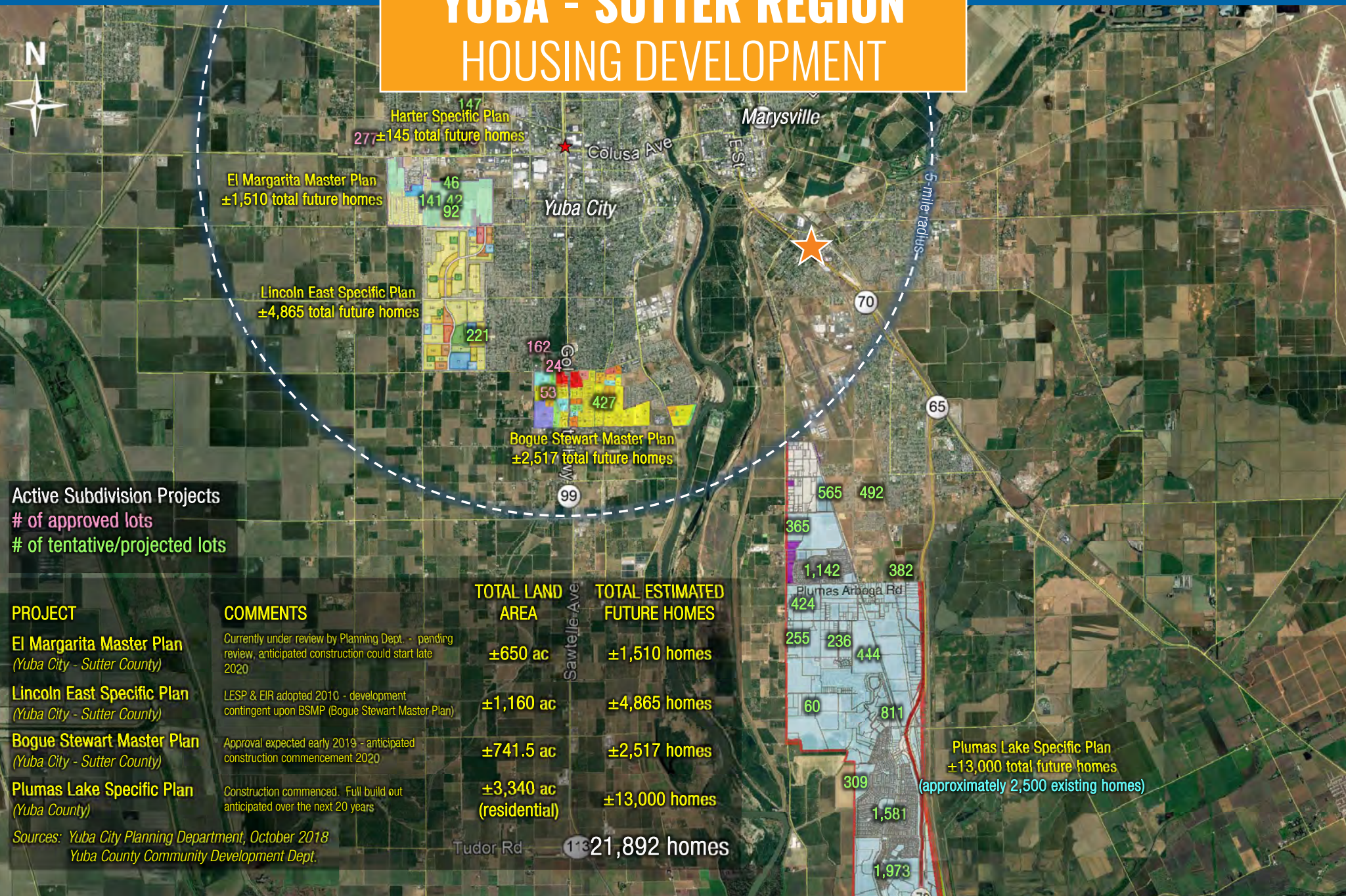
YUBA - SUTTER REGION IMMEDIATE TRADE AREA



TOYOTA AMPHITHEATRE
& HARD ROCK CASINO

10 MILES

YUBA - SUTTER REGION HOUSING DEVELOPMENT



Active Subdivision Projects
 # of approved lots
 # of tentative/projected lots

PROJECT	COMMENTS	TOTAL LAND AREA	TOTAL ESTIMATED FUTURE HOMES
El Margarita Master Plan (Yuba City - Sutter County)	Currently under review by Planning Dept. - pending review, anticipated construction could start late 2020	±650 ac	±1,510 homes
Lincoln East Specific Plan (Yuba City - Sutter County)	LESP & EIR adopted 2010 - development contingent upon BSMP (Bogue Stewart Master Plan)	±1,160 ac	±4,865 homes
Bogue Stewart Master Plan (Yuba City - Sutter County)	Approval expected early 2019 - anticipated construction commencement 2020	±741.5 ac	±2,517 homes
Plumas Lake Specific Plan (Yuba County)	Construction commenced. Full build out anticipated over the next 20 years	±3,340 ac (residential)	±13,000 homes

Sources: Yuba City Planning Department, October 2018
 Yuba County Community Development Dept.

Tudor Rd 13 21,892 homes

Plumas Lake Specific Plan
 ±13,000 total future homes
 (approximately 2,500 existing homes)

FOR MORE INFORMATION PLEASE CONTACT

MATT GOLDSTEIN

Vice President
CA DRE #01886233
mgoldstein@gallellire.com

AMAN BAINS

Associate Vice President
CA DRE #02101492
abains@gallellire.com

GALLELLI REAL ESTATE

3005 Douglas Boulevard, Suite 200
Roseville, CA 95661
916-772-1700
Gallellire.com



Gary B. Gallelli, Broker
CA DRE #00811881