

HIGH VISIBILITY RETAIL PAD

1450 Lead Hill Boulevard - Roseville, CA

A PROUD MEMBER OF
CHAINLINKS
RETAIL ADVISORS



Matt Goldstein
Vice President
CA DRE #01886233
mgoldstein@GallelliIRE.com

Licensed as Real Estate Salespersons by the CA DRE. The information contained herein has been obtained from sources we deem reliable. While we have no reason to doubt its accuracy, we do not guarantee it.
© Gallelli Real Estate. All Rights Reserved.

Gallelli Real Estate
3005 Douglas Blvd., Suite 200
Roseville, CA 95661
P 916 772 1700
www.GallelliIRE.com
Gary B. Gallelli, Broker
CA DRE #00811881



1450 LEAD HILL BOULEVARD

PROPERTY HIGHLIGHTS & DEMOGRAPHICS

A PROUD MEMBER OF
CHAINLINKS
RETAIL ADVISORS

location:

SWC Lead Hill Boulevard and Rocky Ridge Drive
Roseville, CA

notable anchor tenants in close proximity:

Target, Walmart Supercenter, Kaiser Permanente, UA Theaters, Carmax

availability:

±1,524 SF End Cap Retail Space
±994 SF Retail Space (Available 03/01/26)



2024 total population

1-mile	7,680
3-mile	102,668
5-mile	263,001



2024 daytime population

1-mile	28,567
3-mile	135,137
5-mile	290,537



2024 total employees

1-mile	26,119
3-mile	73,906
5-mile	133,154



2024 total households

1-mile	3,386
3-mile	40,345
5-mile	100,039



2024 average HH income

1-mile	\$155,990
3-mile	\$144,293
5-mile	\$148,856



traffic counts

Lead Hill Blvd (west of Rocky Ridge Dr)	14,309
Lead Hill Blvd (east of Rocky Ridge Dr)	7,278
Rocky Ridge Dr (south of Lead Hill Blvd)	18,688
Rocky Ridge Dr (north of Lead Hill Blvd)	11,926

Erik's DeliCafé.

The Best Sandwiches Are Built Right Here!

adobobink.
Filipino Food

PANDA
EXPRESS

Notable Retailers & Traffic Generators in Close Proximity Include:

CARMAX


KAISER PERMANENTE®



 **Sutter Health**
Sutter Roseville Medical Center

 **TARGET**

UNITED ARTISTS
Theatres™

Walmart 
Supercenter


Developments, LLC

Matt Goldstein
Vice President
CA DRE #01886233
goldstein@GallelliRE.com

Gallelli Real Estate
3005 Douglas Blvd., Suite 200
Roseville, CA 95661
P 916 772 1700
www.GallelliRE.com
Gary B. Gallelli, Broker
CA DRE #00811881


GALLELLI
REAL ESTATE

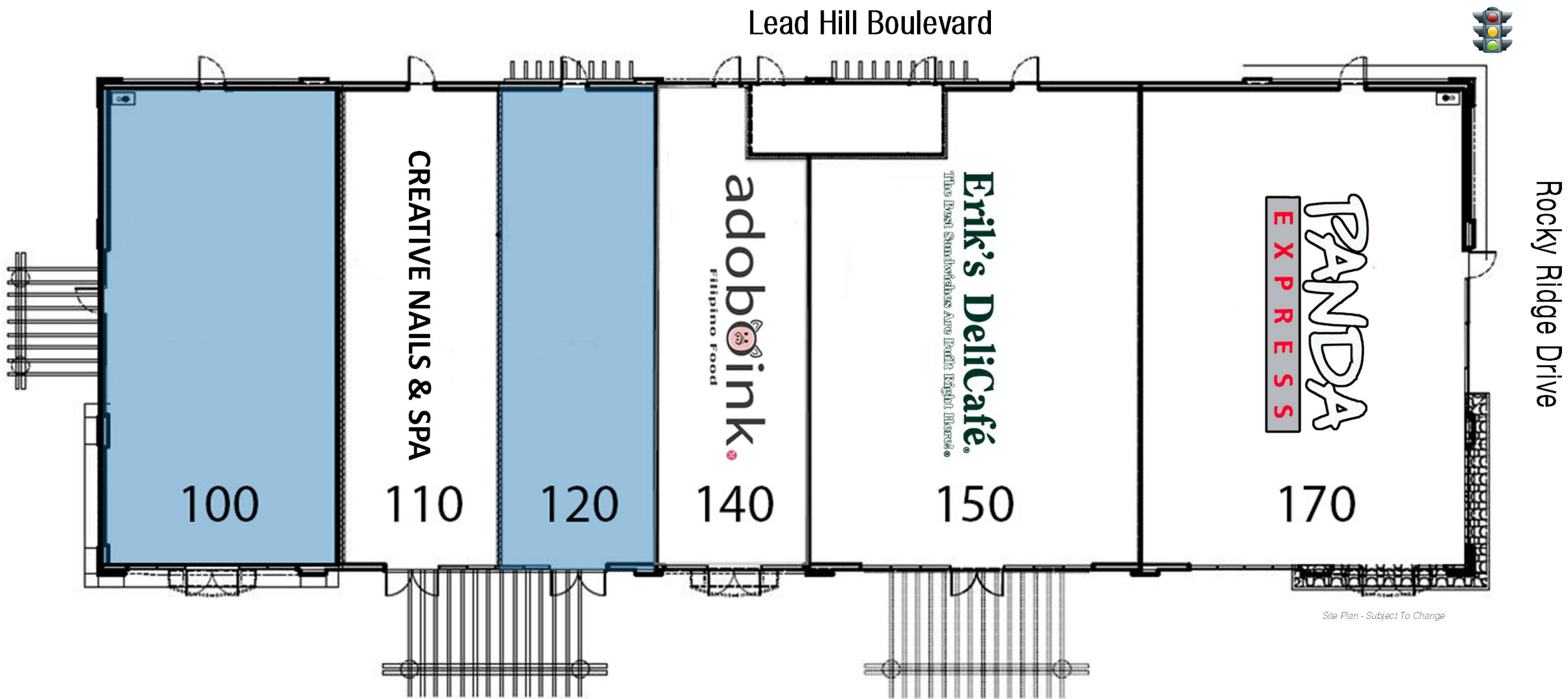


1450 LEAD HILL BOULEVARD

SWC Lead Hill Boulevard & Rocky Ridge Drive - Roseville, CA

A proud member of
CHAINLINKS
RETAIL ADVISORS

SITE PLAN



SUITE	TENANT	SQ. FT.
100	AVAILABLE	1,524
110	Creative Nails & Spa	994
120	AVAILABLE (03/01/2026)	994
140	Adoboink	913
150	Erik's Deli Café	2,194
170	Panda Express	2,081

For leasing information,
please contact:

Matt Goldstein
CA DRE #01886233
mgoldstein@GallelliRE.com

Gallelli Real Estate
3005 Douglas Blvd., Suite 200
Roseville, CA 95661
P 916 772 1700
www.GallelliRE.com
Gary B. Gallelli, Broker
CA DRE #00811881

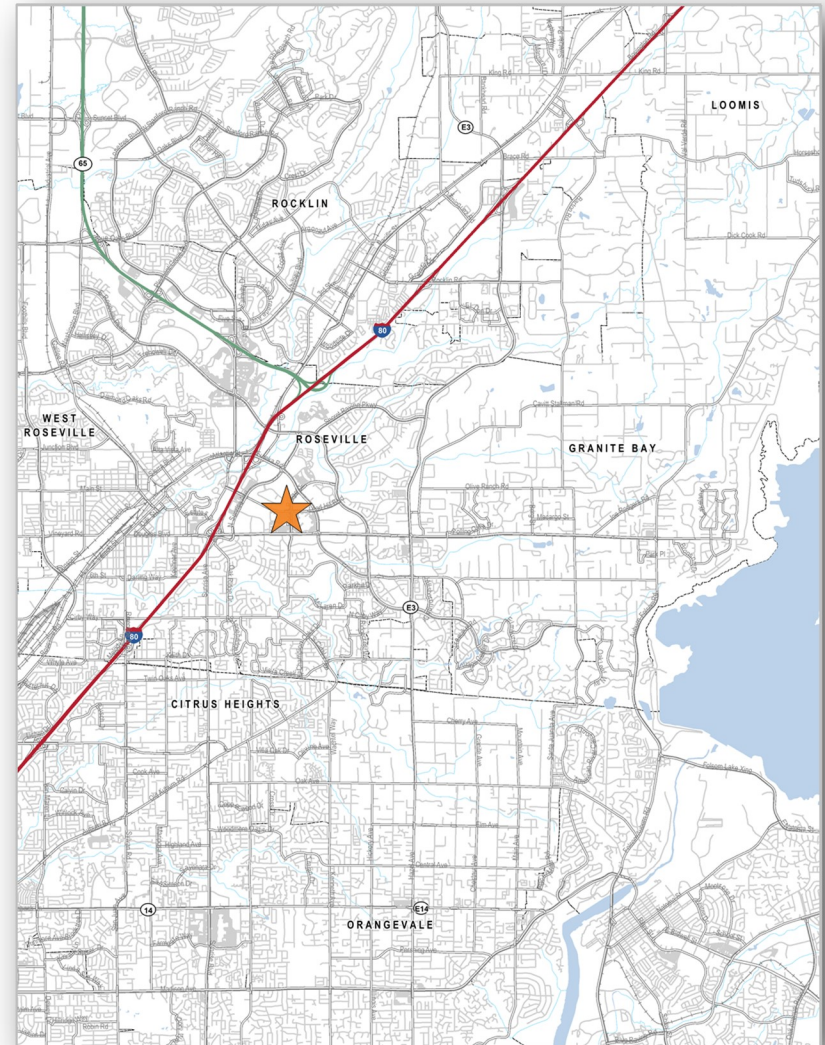
1450 LEAD HILL BOULEVARD

PROPERTY OVERVIEW

1450 LEAD HILL is an ±8,700 square foot highly visible retail pad building at the southwest corner of Lead Hill Boulevard and Rocky Ridge Drive, one of the area's highest volume traffic intersections in Roseville, California. This pad is adjacent to Walmart and Target.

The City of Roseville is one the Sacramento area's premier trade areas. Tenants in the center benefit from being centrally located among more than 2,000,000 square feet of "Class A" office space and 3,200,000 square feet of retail within a 3-mile radius.

Notable daytime traffic generators within the immediate vicinity include Walmart, Target, Carmax, Kaiser Permanente, Sutter Roseville Medical Center, The Roseville Automall, Eureka Corporate Center and Stone Point Corporate Center.



Matt Goldstein
Vice President
CA DRE #01886233
mgoldstein@GallelliIRE.com

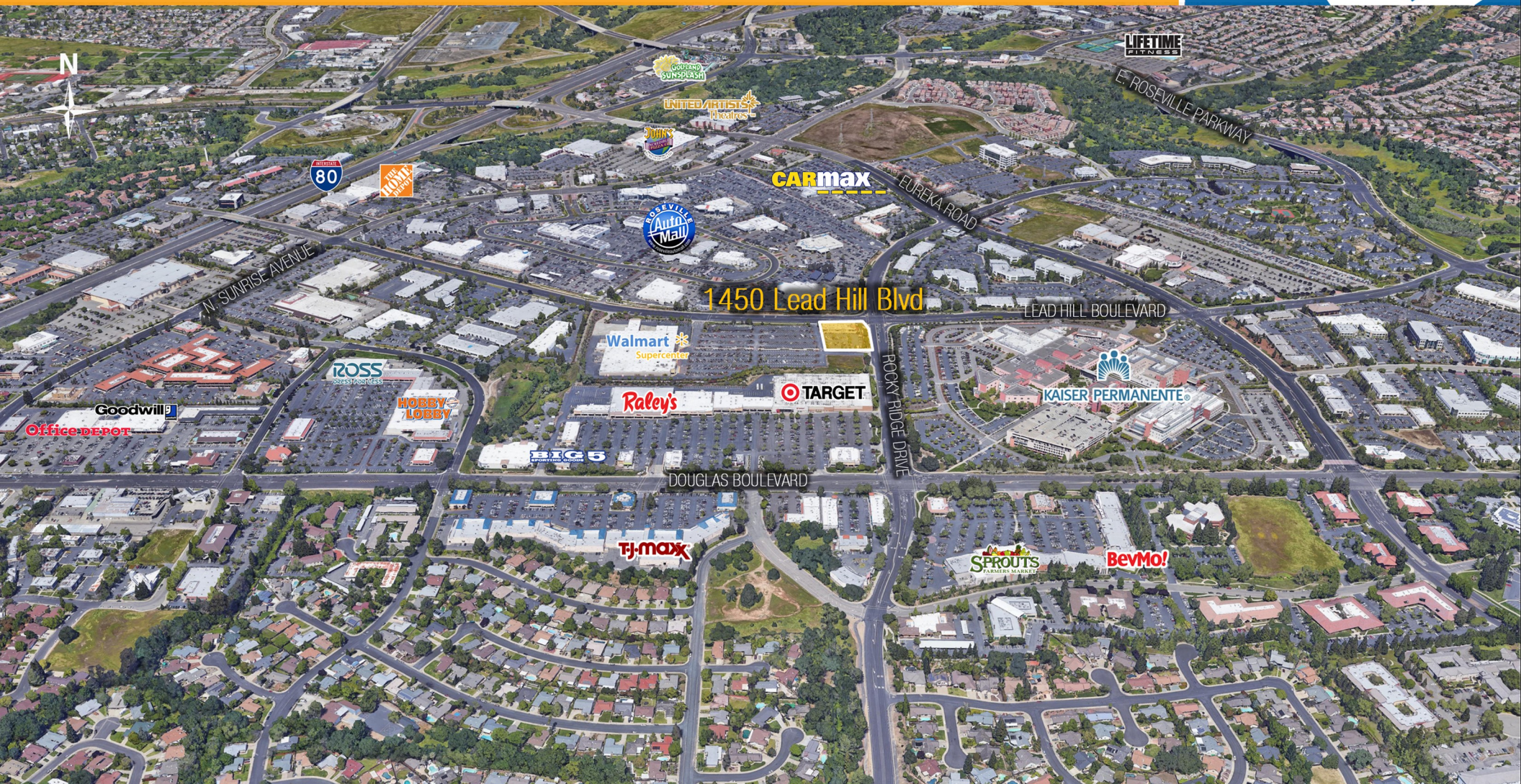
Gallelli Real Estate
3005 Douglas Blvd., Suite 200
Roseville, CA 95661
P 916 772 1700
www.GallelliIRE.com
Gary B. Gallelli, Broker
CA DRE #00811881



1450 LEAD HILL BOULEVARD

IMMEDIATE VICINITY AERIAL

A PROUD MEMBER OF
CHAINLINKS
RETAIL ADVISORS



cft
Developments, LLC

Matt Goldstein
Vice President
CA DRE #01886233
mgoldstein@GallelliRE.com

Gallelli Real Estate
3005 Douglas Blvd., Suite 200
Roseville, CA 95661
P 916 772 1700
www.GallelliRE.com
Gary B. Gallelli, Broker
CA DRE #00811881



Licensed as Real Estate Salespersons by the CA DRE. The information contained herein has been obtained from sources we deem reliable. While we have no reason to doubt its accuracy, we do not guarantee it.
© Gallelli Real Estate. All Rights Reserved.

1450 LEAD HILL BOULEVARD

RETAIL TRADE AREA AERIAL

A PROUD MEMBER OF
CHAINLINKS
RETAIL ADVISORS



Matt Goldstein
Vice President
CA DRE #01886233
mgoldstein@GallelliIRE.com

Gallelli Real Estate
3005 Douglas Blvd., Suite 200
Roseville, CA 95661
P 916 772 1700
www.GallelliIRE.com
Gary B. Gallelli, Broker
CA DRE #00811881



Licensed as Real Estate Salespersons by the CA DRE. The information contained herein has been obtained from sources we deem reliable. While we have no reason to doubt its accuracy, we do not guarantee it.
© Gallelli Real Estate. All Rights Reserved.

