

STONE CREEK VILLAGE

SWQ Zinfandel Drive & Bear Hollow Drive - Rancho Cordova, CA

A PROUD MEMBER OF
CHAIN LINKS
RETAIL ADVISORS

NOW OPEN!

ONE OF RANCHO CORDOVA'S NEWEST GROCERY-ANCHORED RETAIL CENTERS!



Elliott Homes
A Tradition of Quality since 1914

Matt Goldstein
Vice President
CA DRE #01886233
mgoldstein@GallelliRE.com

Kannon Kuhn
Associate
CA DRE #02079314
kkuhn@GallelliRE.com

Gallelli Real Estate
3005 Douglas Blvd., Suite 200
Roseville, CA 95661
P 916 772 1700
www.GallelliRE.com
Gary B. Gallelli, Broker
CA DRE #00811881

GALLELLI
REAL ESTATE

Licensed as Real Estate Salespersons by the CA DRE. The information contained herein has been obtained from sources we deem reliable. While we have no reason to doubt its accuracy, we do not guarantee it.
© Gallelli Real Estate. All Rights Reserved.



STONE CREEK VILLAGE

PROPERTY HIGHLIGHTS & DEMOGRAPHICS

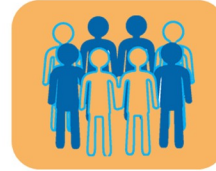
A PROUD MEMBER OF
CHAINLINKS
RETAIL ADVISORS

location: SWQ Zinfandel Drive and Bear Hollow Drive
Rancho Cordova, CA

anchor tenant(s): Sprouts Farmer's Market

shopping center GLA: ±34,000 Square Feet (GLA)

availability: 100% Leased



2024 total population

1-mile	13,404
3-mile	70,611
5-mile	181,774



2024 daytime population

1-mile	25,956
3-mile	88,178
5-mile	202,292



2024 total employees

1-mile	10,838
3-mile	50,754
5-mile	92,153



2024 total households

1-mile	5,264
3-mile	25,708
5-mile	70,011



2024 average HH income

1-mile	\$152,646
3-mile	\$117,813
5-mile	\$138,525



traffic counts

Zinfandel Dr (north of Bear Hollow Dr)	15,638
Zinfandel Dr (south of Bear Hollow Dr)	19,496
Bear Hollow Dr (west of Zinfandel Dr)	3,972

SPROUTS
FARMERS MARKET

(In Development)
Quick Quack
CAR WASH
Don't Drive Dirty.com

DUTCH BROS
Coffee

PACIFIC
DENTAL SERVICES

velly
pizza

tenants within close proximity:

BOOT BARN
Live West

COSTCO
WHOLESALE

CVS
pharmacy

FedEx Kinko's
Office and Print Center

the Habit
BURGER GRILL

LOWE'S
Improving Home Improvement

Marshalls

Michaels
MAKE CREATIVITY HAPPEN

NOODLES
COMPANY
World Kitchens

Panera
BREAD

PETSMART

ROSS
DRESS FOR LESS

SAFeway
Ingredients for life..

Starbucks

TARGET

Walmart
Supercenter

Elliott Homes
A Tradition of Quality since 1914

Matt Goldstein
Vice President
CA DRE #01886233
mgoldstein@GallellIRE.com

Kannon Kuhn
Associate
CA DRE #02079314
kkuhn@GallellIRE.com

Gallelli Real Estate
3005 Douglas Blvd., Suite 200
Roseville, CA 95661
P 916 772 1700
www.GallellIRE.com
Gary B. Gallelli, Broker
CA DRE #00811881

GALLELLI
REAL ESTATE

Licensed as Real Estate Salespersons by the CA DRE. The information contained herein has been obtained from sources we deem reliable. While we have no reason to doubt its accuracy, we do not guarantee it.
© Gallelli Real Estate. All Rights Reserved.



STONE CREEK VILLAGE

PROPERTY OVERVIEW

A PROUD MEMBER OF
CHAINLINKS
RETAIL ADVISORS

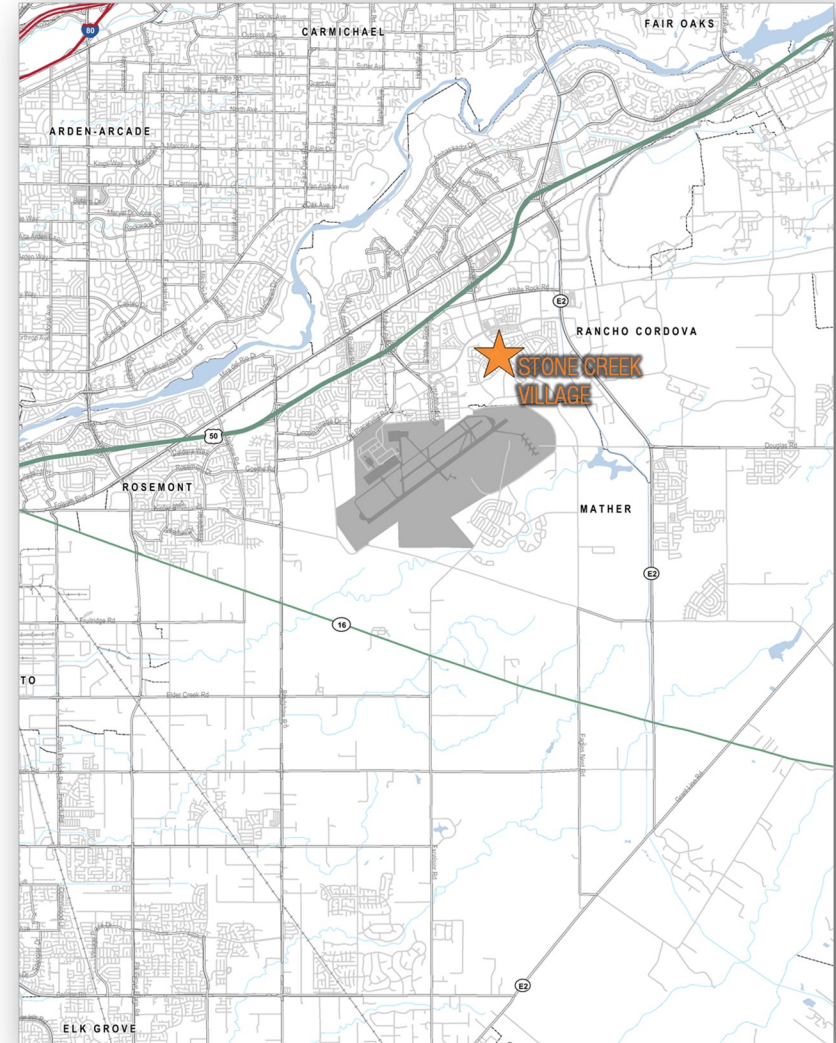
Stone Creek Village is a new retail development, anchored by a newly opened Sprouts Farmers Market, in Rancho Cordova and is located at the southwest quadrant of Zinfandel Drive and Bear Hollow Drive.

This ±34,000 square foot neighborhood shopping center will help serve Rancho Cordova's ongoing area that includes the Sunridge Specific Plan and the Rio Del Oro Specific Plan.

These specific plans and more have been approved for the development of more than 43,000 total homes, making Rancho Cordova the next explosive growth market in the Sacramento Region.

The City of Rancho Cordova offers an ideal retail environment and is the Sacramento area's largest employment sub-center, with almost 50,000 employees in more than 1,900 businesses and 72,203 residents within city limits.

Notable daytime employment generators in Rancho Cordova include Aerojet Rocketdyne, Delta Dental, VSP, HealthNet and Sacramento County Office of Education.



Elliott Homes
A Tradition of Quality since 1914

Matt Goldstein
Vice President
CA DRE #01886233
mgoldstein@GallellIRE.com

Kannon Kuhn
Associate
CA DRE #02079314
kkuhn@GallellIRE.com

Gallelli Real Estate
3005 Douglas Blvd., Suite 200
Roseville, CA 95661
P 916 772 1700
www.GallellIRE.com
Gary B. Gallelli, Broker
CA DRE #00811881



Licensed as Real Estate Salespersons by the CA DRE. The information contained herein has been obtained from sources we deem reliable. While we have no reason to doubt its accuracy, we do not guarantee it.
© Gallelli Real Estate. All Rights Reserved.



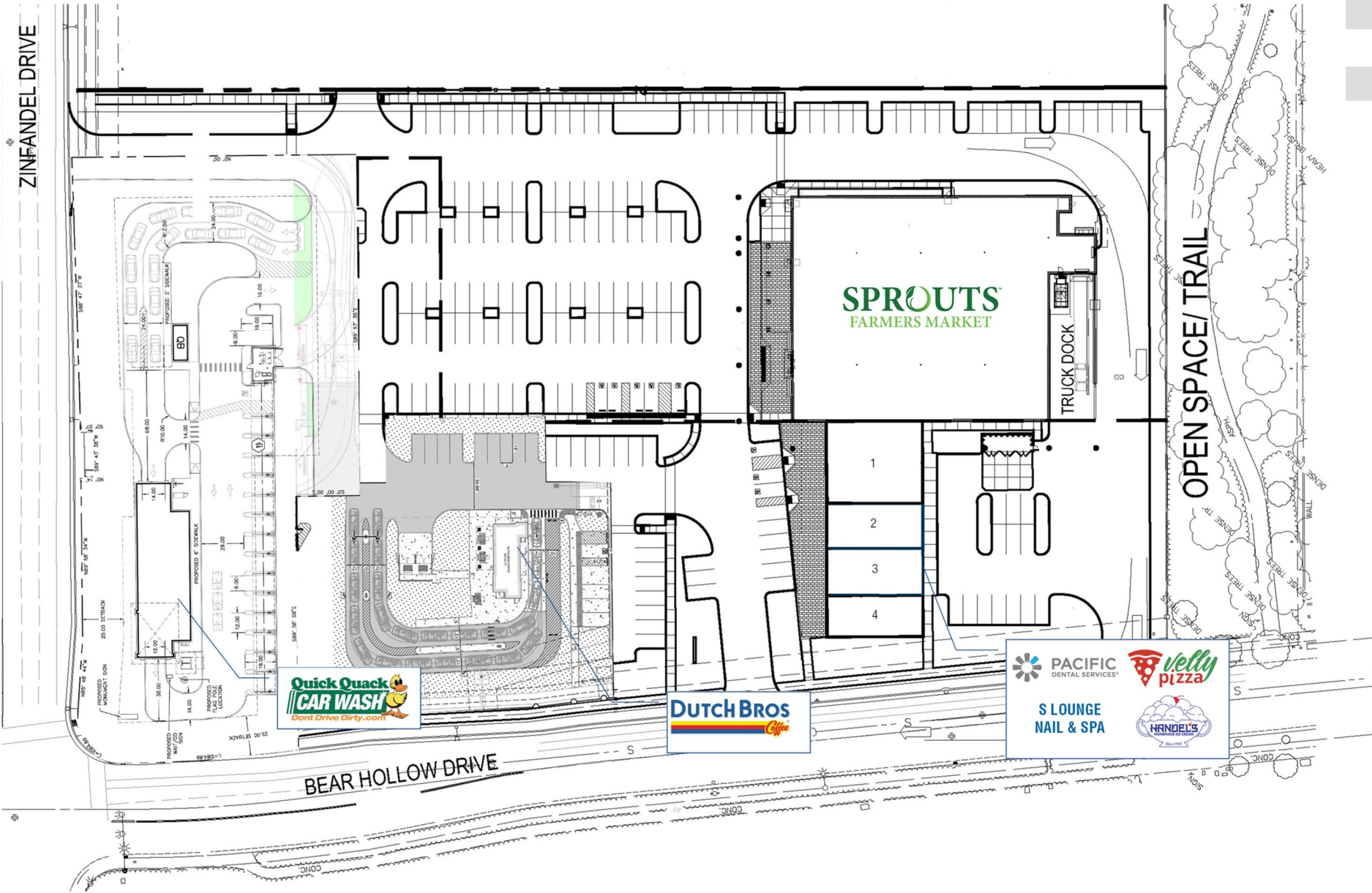
STONE CREEK VILLAGE

SWQ Zinfandel Drive & Bear Hollow Drive - Rancho Cordova, CA

A proud member of
CHAINLINKS
RETAIL ADVISORS



SITE PLAN



SUITE	TENANT	SQ. FT./AC.
MAJ 1	Sprouts Farmers Market (Now Open)	23,000
Pad 1	Quick Quack Car Wash (In Development)	1.296 Ac.
Pad 2	Dutch Bros Coffee	900
SHOPS		
1	Pacific Dental (Now Open)	3,200
2	S Lounge Nail & Spa	1,600
3	Velly Pizza	1,600
4	Handels Homemade Ice Cream	1,598

For leasing information,
please contact:

Matt Goldstein
CA DRE #01886233
mgoldstein@GallelliRE.com

Kannon Kuhn
CA DRE #02079314
kkuhn@GallelliRE.com

Gallelli Real Estate
3005 Douglas Blvd., Suite 200
Roseville, CA 95661
P 916 772 1700
www.GallelliRE.com
Gary B. Gallelli, Broker
CA DRE #00811881

STONE CREEK VILLAGE

INTERSECTION AERIAL

A PROUD MEMBER OF
CHAINLINKS
RETAIL ADVISORS



Elliott Homes
A Tradition of Quality since 1914

Matt Goldstein
Vice President
CA DRE #01886233
mgoldstein@GallelliRE.com

Kannon Kuhn
Associate
CA DRE #02079314
kkuhn@GallelliRE.com

Gallelli Real Estate
3005 Douglas Blvd., Suite 200
Roseville, CA 95661
P 916 772 1700
www.GallelliRE.com
Gary B. Gallelli, Broker
CA DRE #00811881



Licensed as Real Estate Salespersons by the CA DRE. The information contained herein has been obtained from sources we deem reliable. While we have no reason to doubt its accuracy, we do not guarantee it.
© Gallelli Real Estate. All Rights Reserved.



STONE CREEK VILLAGE

RETAIL TRADE AREA AERIAL

A PROUD MEMBER OF
CHAINLINKS
RETAIL ADVISORS



Elliott Homes
A Tradition of Quality since 1914

Matt Goldstein
Vice President
CA DRE #01886233
mgoldstein@GallelliRE.com

Kannon Kuhn
Associate
CA DRE #02079314
kkuhn@GallelliRE.com

Gallelli Real Estate
3005 Douglas Blvd., Suite 200
Roseville, CA 95661
P 916 772 1700
www.GallelliRE.com
Gary B. Gallelli, Broker
CA DRE #00811881



Licensed as Real Estate Salespersons by the CA DRE. The information contained herein has been obtained from sources we deem reliable. While we have no reason to doubt its accuracy, we do not guarantee it.
© Gallelli Real Estate. All Rights Reserved.

