

# STANFORD RANCH VILLAGE

NWC Sunset Boulevard & Stanford Ranch Road - Rocklin, CA

A PROUD MEMBER OF  
**CHAINLINKS**  
RETAIL ADVISORS



**Gerrity:**

Kevin Soares  
Executive Vice President  
CA DRE #01291491  
ksoares@GallelliRE.com

Gallelli Real Estate  
3005 Douglas Blvd., Suite 200  
Roseville, CA 95661  
P 916 772 1700  
www.GallelliRE.com  
Gary B. Gallelli, Broker  
CA DRE #00811881



Licensed as Real Estate Salespersons by the CA DRE. The information contained herein has been obtained from sources we deem reliable. While we have no reason to doubt its accuracy, we do not guarantee it.  
© Gallelli Real Estate. All Rights Reserved.



# STANFORD RANCH VILLAGE

## PROPERTY HIGHLIGHTS & DEMOGRAPHICS

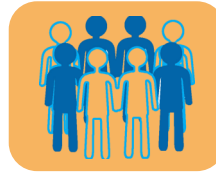
A PROUD MEMBER OF  
**CHAINLINKS**  
RETAIL ADVISORS

**location:** NWC Stanford Ranch Road and Sunset Boulevard  
Rocklin, CA

**anchor tenants:** Bel Air Market

**shopping center GLA:** ±90,596 Square Feet (GLA)

**availability:** ±1,000 SF 2nd Gen Salon Space  
±964 - ±4,207 SF Retail Space



### 2023 total population

1-mile	19,308
3-mile	96,628
5-mile	221,059



### 2023 daytime population

1-mile	18,552
3-mile	108,992
5-mile	253,096



### 2023 total employees

1-mile	5,856
3-mile	61,860
5-mile	124,505



### 2023 total households

1-mile	6,715
3-mile	34,450
5-mile	81,579



### 2023 average HH income

1-mile	\$144,775
3-mile	\$153,161
5-mile	\$145,942

### traffic counts

Sunset Blvd (north of Stanford Ranch Rd)	7,215
Sunset Blvd (south of Stanford Ranch Rd)	7,416
Stanford Ranch Rd (west of Sunset Blvd)	8,561
Stanford Ranch Rd (east of Sunset Blvd)	6,970



Kevin Soares  
Executive Vice President  
CA DRE #01291491  
ksoares@GallelliRE.com

Gallelli Real Estate  
3005 Douglas Blvd., Suite 200  
Roseville, CA 95661  
P 916 772 1700  
www.GallelliRE.com  
Gary B. Gallelli, Broker  
CA DRE #00811881



# STANFORD RANCH VILLAGE

## PROPERTY OVERVIEW

A PROUD MEMBER OF  
**CHAINLINKS**  
RETAIL ADVISORS

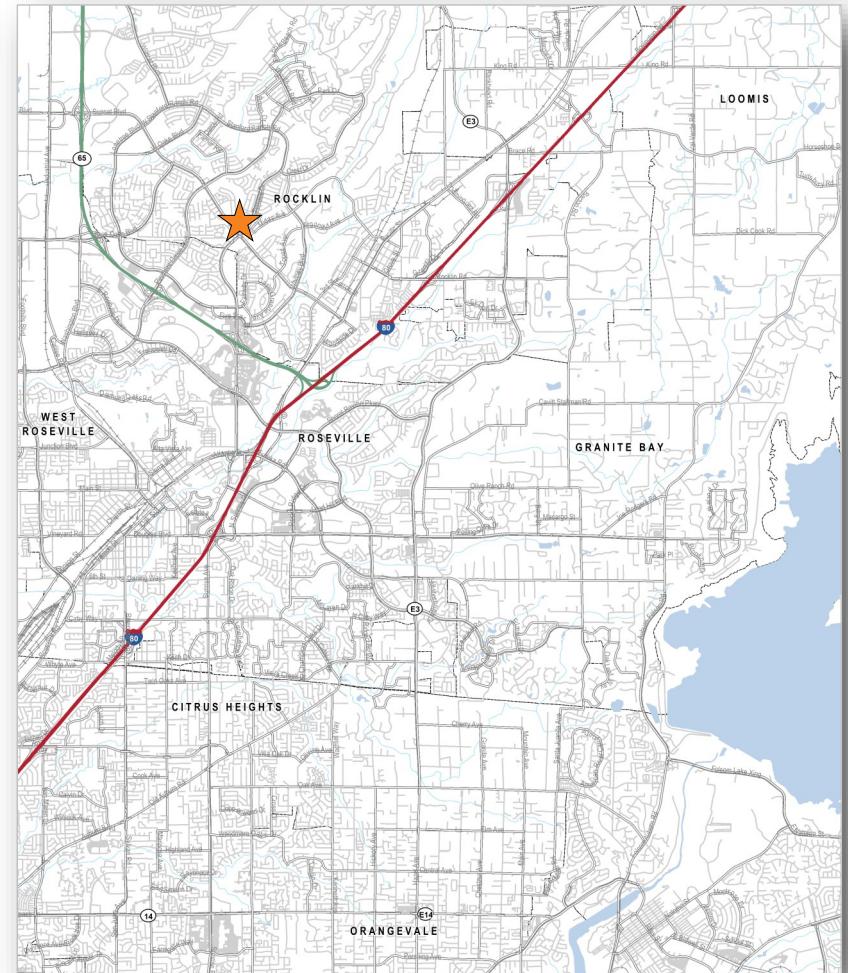
*Stanford Ranch Village* is a ±90,596 square foot neighborhood center at the northwest corner of Sunset Boulevard and Stanford Ranch Road in Rocklin, California.

The center serves the affluent Stanford Ranch community of Rocklin and is among the strongest performing grocery anchored shopping centers in the immediate area.

Anchored by Bel Air Market, the center benefits from excellent population and above-average household income demographics.

*Stanford Ranch Village* is the most established grocery anchored center in North Rocklin trade area and continues to be one of the most upscale centers in the community.

*The center offers a second generation salon space that is situated at the main ingress/egress point along Stanford Ranch Road.*



Kevin Soares  
Executive Vice President  
CA DRE #01291491  
ksoares@GallelliRE.com

Gallelli Real Estate  
3005 Douglas Blvd., Suite 200  
Roseville, CA 95661  
P 916 772 1700  
www.GallelliRE.com  
Gary B. Gallelli, Broker  
CA DRE #00811881



# STANFORD RANCH VILLAGE

INTERSECTION AERIAL

A PROUD MEMBER OF  
**CHAINLINKS**  
RETAIL ADVISORS



Kevin Soares  
Executive Vice President  
CA DRE #01291491  
ksoares@GallelliRE.com

Gallelli Real Estate  
3005 Douglas Blvd., Suite 200  
Roseville, CA 95661  
P 916 772 1700  
www.GallelliRE.com  
Gary B. Gallelli, Broker  
CA DRE #00811881



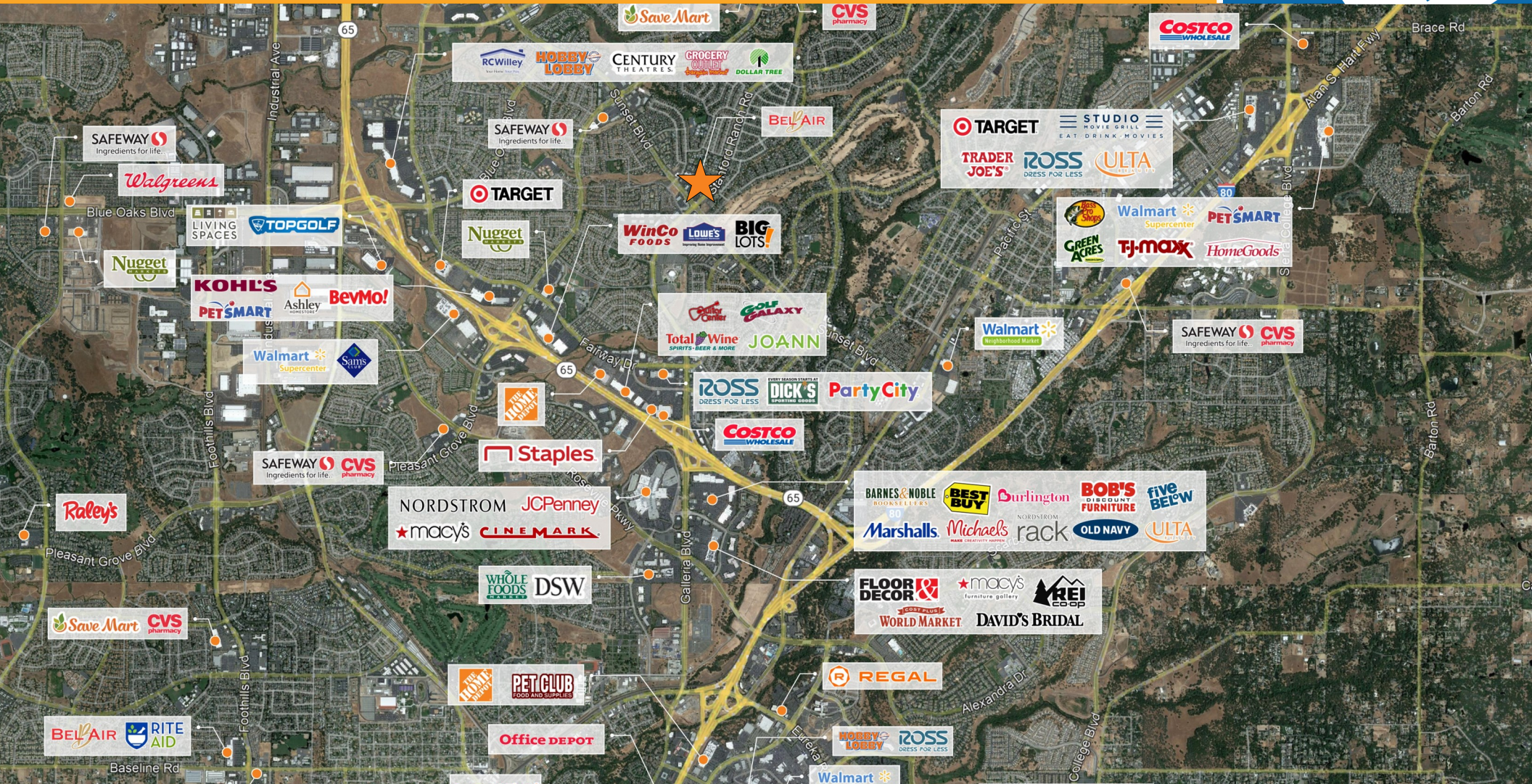
Licensed as Real Estate Salespersons by the CA DRE. The information contained herein has been obtained from sources we deem reliable. While we have no reason to doubt its accuracy, we do not guarantee it. © Gallelli Real Estate. All Rights Reserved.



# STANFORD RANCH VILLAGE

## RETAIL TRADE AREA AERIAL

A PROUD MEMBER OF  
**CHAINLINKS**  
RETAIL ADVISORS



Kevin Soares  
Executive Vice President  
CA DRE #01291491  
ksoares@GallellIRE.com

Gallelli Real Estate  
3005 Douglas Blvd., Suite 200  
Roseville, CA 95661  
P 916 772 1700  
www.GallellIRE.com  
Gary B. Gallelli, Broker  
CA DRE #00811881



Licensed as Real Estate Salespersons by the CA DRE. The information contained herein has been obtained from sources we deem reliable. While we have no reason to doubt its accuracy, we do not guarantee it.  
© Gallelli Real Estate. All Rights Reserved.

