

# RALEY'S CENTER OF ELK GROVE

SEC Elk Grove Boulevard & Franklin Boulevard - Elk Grove, CA

A PROUD MEMBER OF  
**CHAINLINKS**  
RETAIL ADVISORS



#1 RANKED CA RALEY'S SUPERMARKET - 1.3 M VISITS ANNUALLY!



**HEITMAN**  
A REAL ESTATE INVESTMENT MANAGEMENT FIRM

Kevin Soares  
Executive Vice President  
CA DRE #01291491  
ksoares@GallelliRE.com

Jeff Hagan  
Senior Vice President  
CA DRE #01494218  
jhagan@GallelliRE.com

Gallelli Real Estate  
3005 Douglas Blvd., Suite 200  
Roseville, CA 95661  
P 916 772 1700  
www.GallelliRE.com  
Gary B. Gallelli, Broker  
CA DRE #00811881



Licensed as Real Estate Salespersons by the CA DRE. The information contained herein has been obtained from sources we deem reliable. While we have no reason to doubt its accuracy, we do not guarantee it.  
© Gallelli Real Estate. All Rights Reserved.



# RALEY'S CENTER OF ELK GROVE

## PROPERTY HIGHLIGHTS & DEMOGRAPHICS

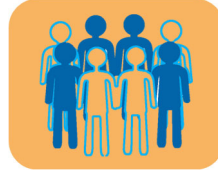
A PROUD MEMBER OF  
**CHAINLINKS**  
RETAIL ADVISORS

**location:** SEC Elk Grove Boulevard and Franklin Boulevard  
Elk Grove, CA

**anchor tenants:** Raley's

**shopping center GLA:** ±103,760 Square Feet (GLA)

**availability:** ±869 SF - ±2,482 SF Retail Space



### 2023 total population

1-mile	17,632
3-mile	111,060
5-mile	220,504



### 2023 daytime population

1-mile	12,483
3-mile	87,988
5-mile	185,949



### 2023 total employees

1-mile	2,818
3-mile	21,788
5-mile	56,730



### 2023 total households

1-mile	5,814
3-mile	35,469
5-mile	68,952



### 2023 average HH income

1-mile	\$138,724
3-mile	\$137,891
5-mile	\$121,645

### traffic counts

Elk Grove Blvd (west of Franklin Blvd)	30,300
Elk Grove Blvd (east of Franklin)	32,300
Franklin Blvd (north of Elk Grove Blvd)	21,100
Franklin Blvd (north of Elk Grove Blvd)	19,300



Kevin Soares  
Executive Vice President  
CA DRE #01291491  
ksoares@GallelliRE.com

Jeff Hagan  
Senior Vice President  
CA DRE #01494218  
jhagan@GallelliRE.com

Gallelli Real Estate  
3005 Douglas Blvd., Suite 200  
Roseville, CA 95661  
P 916 772 1700  
www.GallelliRE.com  
Gary B. Gallelli, Broker  
CA DRE #00811881



# RALEY'S CENTER OF ELK GROVE

## PROPERTY OVERVIEW

A PROUD MEMBER OF  
**CHAINLINKS**  
RETAIL ADVISORS



### RALEY'S SUPERMARKETS RANKED NATIONALLY BY ANNUAL VISITS

#1 Raley's - Elk Grove Boulevard, Elk Grove, CA	1.3 M VISITS*
#2 Raley's - G Street Merced, CA	1.2 M Visits*
#3 Raley's - Natomas Boulevard, Sacramento, CA	1.1 M Visits*
#4 Raley's - Freeport Boulevard, Sacramento, CA	1.1 M Visits*
#5 Raley's - Emerald Bay Road, South Lake Tahoe, CA	1.0 M Visits*

**Raley's Center of Elk Grove** is located at the southeast corner of Elk Grove and Franklin Boulevards in Elk Grove, California, which is Sacramento County's second largest city with an estimated population of ±176,210 people.

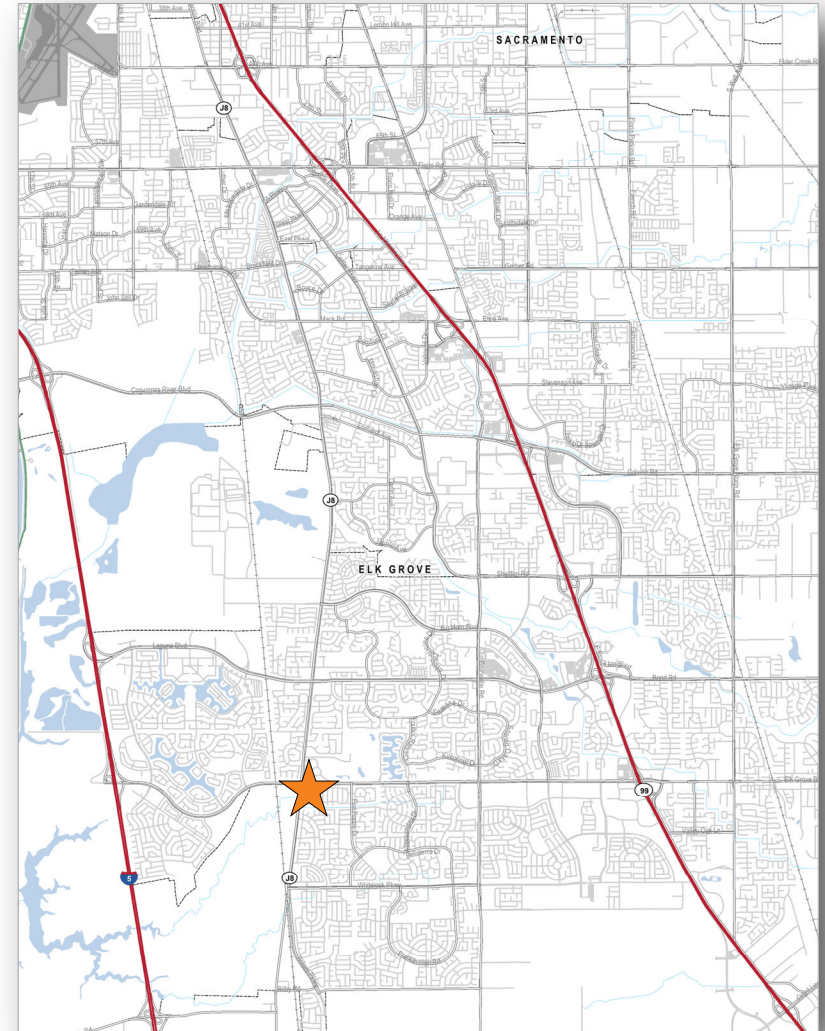
Ideally situated in the northwest portion of the East Franklin Specific Plan, the center draws from both western Elk Grove and the Laguna sub-trade areas.

The center serves an excellent demographic profile that boasts an average household income of \$138,724 in a 1-mile radius.

**Raley's Center of Elk Grove** is a ±103,760 square foot neighborhood shopping center that is anchored by Sacramento's premier grocer Raley's and offers a broad range of services with its tenant mix.

Notable tenants include Starbucks, Chipotle, Jamba Juice, Chase Bank, Poppy Bank, Panda Express and Banfield Pet Hospital.

Additional services include medical, dentistry, dry cleaning and a nail salon.



\* Annual 2023 Report - Placer.ai

**HEITMAN**  
A REAL ESTATE INVESTMENT MANAGEMENT FIRM

Kevin Soares  
Executive Vice President  
CA DRE #01291491  
ksoares@GallelliRE.com

Jeff Hagan  
Senior Vice President  
CA DRE #01494218  
jhagan@GallelliRE.com

Gallelli Real Estate  
3005 Douglas Blvd., Suite 200  
Roseville, CA 95661  
P 916 772 1700  
www.GallelliRE.com  
Gary B. Gallelli, Broker  
CA DRE #00811881



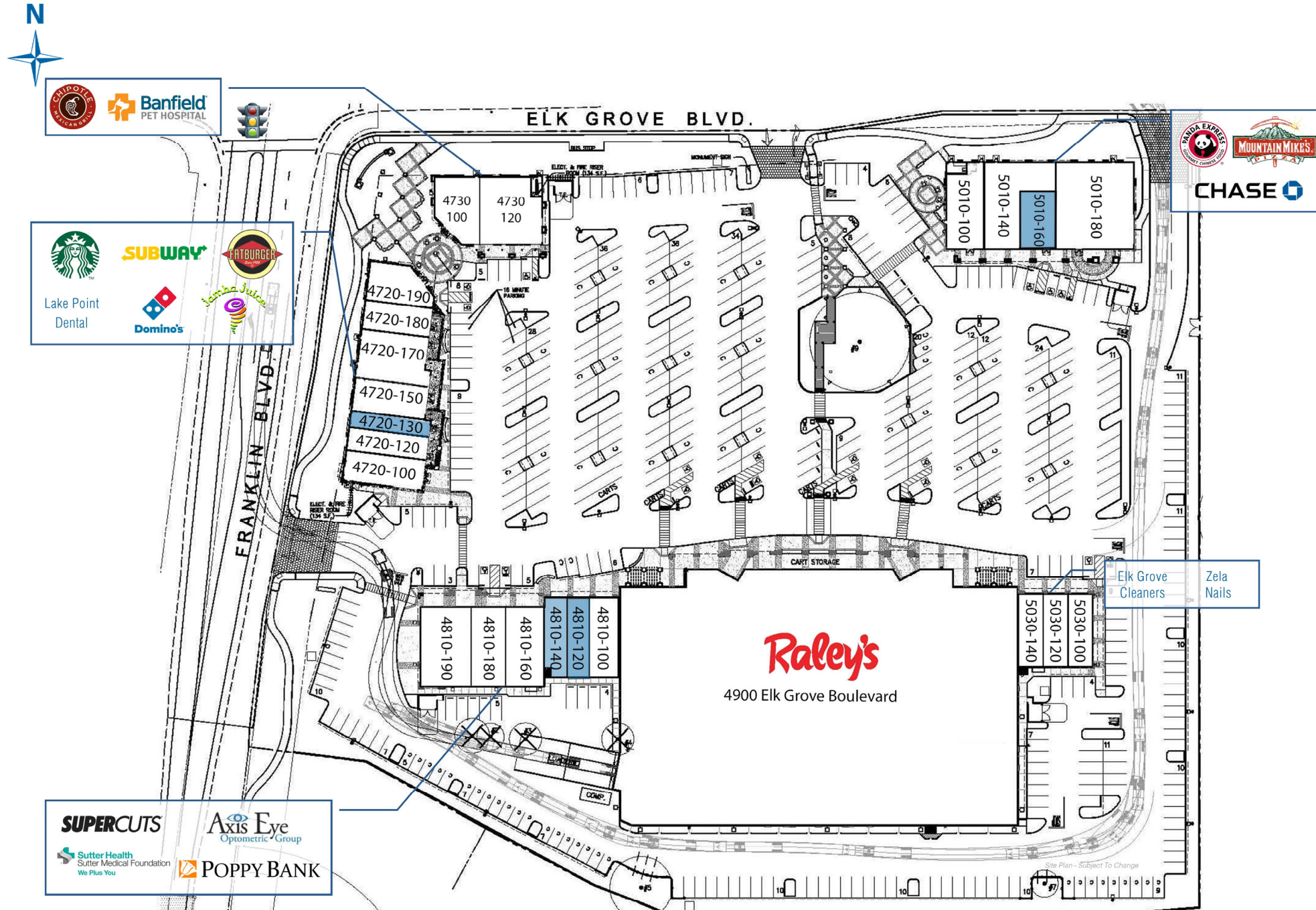
**GALLELLI**  
REAL ESTATE

# RALEY'S CENTER OF ELK GROVE

SEC Elk Grove Boulevard & Franklin Boulevard - Elk Grove, CA

A proud member of  
**CHAINLINKS**  
RETAIL ADVISORS

## SITE PLAN



SUITE	TENANT	SQ. FT.
4720-100	Starbucks	1,500
4720-120	Subway	1,200
4720-130	<b>AVAILABLE</b>	869
4720-150	Fat Burger	1,484
4720-170	Lake Point Dental	2,384
4720-180	Domino's	1,305
4720-190	Jamba Juice	1,500
4730-100	Chipotle	1,901
4730-120	Banfield Pet Hospital	2,550
4810-100	Supercuts	1,360
4810-120	<b>AVAILABLE</b>	1,310
4810-140	<b>AVAILABLE</b>	1,172
4810-160	Axis Eye Optometric Group	2,000
4810-180	Sutter Medical Foundation	1,800
4810-190	Poppy Bank	2,683
4900	Raley's	64,705
5010-100	Panda Express	2,000
5010-140	Mountain Mike's Pizza	3,144
5010-160	<b>AVAILABLE</b>	893
5010-180	Chase Bank	4,400
5030-100	Elk Grove Cleaners	1,200
5030-120	Zela Nails	1,200
5030-140	Personal Express Insurance	1,200

For leasing information,  
please contact:

**Kevin Soares**  
CA DRE 01291491  
ksoares@GallelliRE.com

**Jeff Hagan**  
CA DRE #01494218  
jhagan@GallelliRE.com

**Gallelli Real Estate**  
3005 Douglas Blvd., Suite 200  
Roseville, CA 95661  
P 916 772 1700  
www.GallelliRE.com  
Gary B. Gallelli, Broker  
CA DRE #00811881

**HEITMAN**  
A REAL ESTATE INVESTMENT MANAGEMENT FIRM

Licensed as Real Estate Salespersons by the CA DRE. The information contained herein has been obtained from sources we deem reliable. While we have no reason to doubt its accuracy, we do not guarantee it. © Gallelli Real Estate. All Rights Reserved.

**GALLELLI**  
REAL ESTATE

# RALEY'S CENTER OF ELK GROVE

## INTERSECTION AERIAL

A PROUD MEMBER OF  
**CHAINLINKS**  
RETAIL ADVISORS



**HEITMAN**  
A REAL ESTATE INVESTMENT MANAGEMENT FIRM

Kevin Soares  
Executive Vice President  
CA DRE #01291491  
ksoares@GallelliRE.com

Jeff Hagan  
Senior Vice President  
CA DRE #01494218  
jhagan@GallelliRE.com

Gallelli Real Estate  
3005 Douglas Blvd., Suite 200  
Roseville, CA 95661  
P 916 772 1700  
www.GallelliRE.com  
Gary B. Gallelli, Broker  
CA DRE #00811881



Licensed as Real Estate Salespersons by the CA DRE. The information contained herein has been obtained from sources we deem reliable. While we have no reason to doubt its accuracy, we do not guarantee it.  
© Gallelli Real Estate. All Rights Reserved.

# RALEY'S CENTER OF ELK GROVE

IMMEDIATE VICINITY RETAIL AERIAL

A PROUD MEMBER OF  
**CHAINLINKS**  
RETAIL ADVISORS



**Kevin Soares**  
Executive Vice President  
CA DRE #01291491  
ksoares@GallelliRE.com

**Jeff Hagan**  
Senior Vice President  
CA DRE #01494218  
jhagan@GallelliRE.com

**Gallelli Real Estate**  
3005 Douglas Blvd., Suite 200  
Roseville, CA 95661  
P 916 772 1700  
www.GallelliRE.com  
Gary B. Gallelli, Broker  
CA DRE #00811881

**HEITMAN**  
A REAL ESTATE INVESTMENT MANAGEMENT FIRM

Licensed as Real Estate Salespersons by the CA DRE. The information contained herein has been obtained from sources we deem reliable. While we have no reason to doubt its accuracy, we do not guarantee it.  
© Gallelli Real Estate. All Rights Reserved.



**GALLELLI**  
REAL ESTATE