

RALEY'S CENTER OF ELK GROVE

SEC Elk Grove Boulevard & Franklin Boulevard - Elk Grove, CA

A PROUD MEMBER OF
CHAINLINKS
RETAIL ADVISORS



#1 RANKED CA RALEY'S SUPERMARKET - 1.3 M VISITS ANNUALLY!



Kevin Soares
Executive Vice President
CA DRE #01291491
ksoares@GallelliRE.com

Jeff Hagan
Senior Vice President
CA DRE #01494218
jhagan@GallelliRE.com

Gallelli Real Estate
3005 Douglas Blvd., Suite 200
Roseville, CA 95661
P 916 772 1700
www.GallelliRE.com
Gary B. Gallelli, Broker
CA DRE #00811881



Licensed as Real Estate Salespersons by the CA DRE. The information contained herein has been obtained from sources we deem reliable. While we have no reason to doubt its accuracy, we do not guarantee it.
© Gallelli Real Estate. All Rights Reserved.



RALEY'S CENTER OF ELK GROVE

PROPERTY HIGHLIGHTS & DEMOGRAPHICS

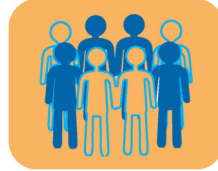
A PROUD MEMBER OF
CHAINLINKS
RETAIL ADVISORS

location: SEC Elk Grove Boulevard and Franklin Boulevard
Elk Grove, CA

anchor tenants: Raley's

shopping center GLA: ±103,760 Square Feet (GLA)

availability: ±869 SF - ±1,310 SF Retail Space



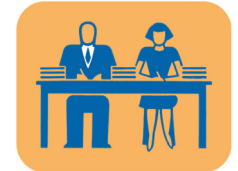
2023 total population

1-mile	17,632
3-mile	111,060
5-mile	220,504



2023 daytime population

1-mile	12,483
3-mile	87,988
5-mile	185,949



2023 total employees

1-mile	2,818
3-mile	21,788
5-mile	56,730



2023 total households

1-mile	5,814
3-mile	35,469
5-mile	68,952



2023 average HH income

1-mile	\$138,724
3-mile	\$137,891
5-mile	\$121,645

traffic counts

Elk Grove Blvd (west of Franklin Blvd)	30,300
Elk Grove Blvd (east of Franklin)	32,300
Franklin Blvd (north of Elk Grove Blvd)	21,100
Franklin Blvd (north of Elk Grove Blvd)	19,300



Kevin Soares
Executive Vice President
CA DRE #01291491
ksoares@GallellIRE.com

Jeff Hagan
Senior Vice President
CA DRE #01494218
jhagan@GallellIRE.com

Gallelli Real Estate
3005 Douglas Blvd., Suite 200
Roseville, CA 95661
P 916 772 1700
www.GallellIRE.com
Gary B. Gallelli, Broker
CA DRE #00811881



GALLELLI
REAL ESTATE



RALEY'S CENTER OF ELK GROVE

PROPERTY OVERVIEW

A PROUD MEMBER OF
CHAINLINKS
RETAIL ADVISORS

RALEY'S SUPERMARKETS RANKED NATIONALLY BY ANNUAL VISITS



#1	Raley's - Elk Grove Boulevard, Elk Grove, CA	1.3 M VISITS*
#2	Raley's - G Street Merced, CA	1.2 M Visits*
#3	Raley's - Natomas Boulevard, Sacramento, CA	1.1 M Visits*
#4	Raley's - Freeport Boulevard, Sacramento, CA	1.1 M Visits*
#5	Raley's - Emerald Bay Road, South Lake Tahoe, CA	1.0 M Visits*

Raley's Center of Elk Grove is located at the southeast corner of Elk Grove and Franklin Boulevards in Elk Grove, California, which is Sacramento County's second largest city with an estimated population of $\pm 176,210$ people.

Ideally situated in the northwest portion of the East Franklin Specific Plan, the center draws from both western Elk Grove and the Laguna sub-trade areas.

The center serves an excellent demographic profile that boasts an average household income of \$138,724 in a 1-mile radius.

Raley's Center of Elk Grove is a $\pm 103,760$ square foot neighborhood shopping center that is anchored by Sacramento's premier grocer Raley's and offers a broad range of services with its tenant mix.

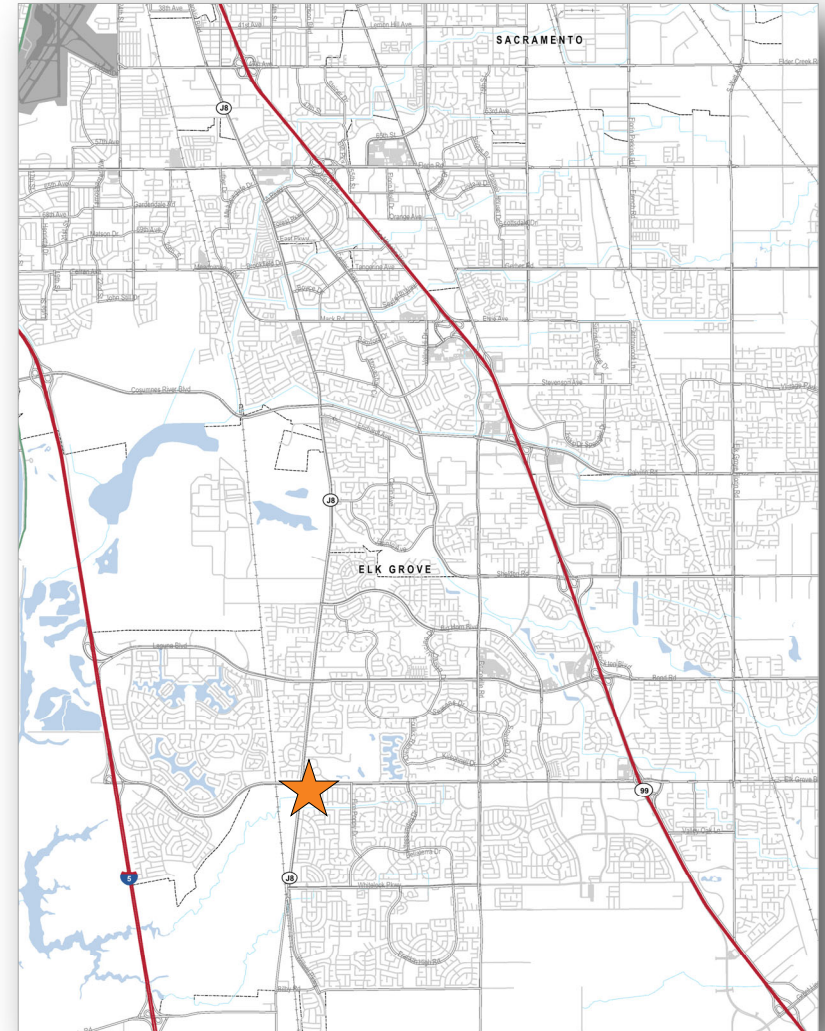
Notable tenants include Starbucks, Chipotle, Jamba Juice, Chase Bank, Panda Express and Banfield Pet Hospital.

Additional services include medical services, dentistry, dry cleaning, insurance services and a nail salon.

* Annual 2023 Report - Placer.ai

Kevin Soares
Executive Vice President
CA DRE #01291491
ksoares@GallelliRE.com

Jeff Hagan
Senior Vice President
CA DRE #01494218
jhagan@GallelliRE.com



Licensed as Real Estate Salespersons by the CA DRE. The information contained herein has been obtained from sources we deem reliable. While we have no reason to doubt its accuracy, we do not guarantee it.
© Gallelli Real Estate. All Rights Reserved.

Gallelli Real Estate
3005 Douglas Blvd., Suite 200
Roseville, CA 95661
P 916 772 1700
www.GallelliRE.com
Gary B. Gallelli, Broker
CA DRE #00811881



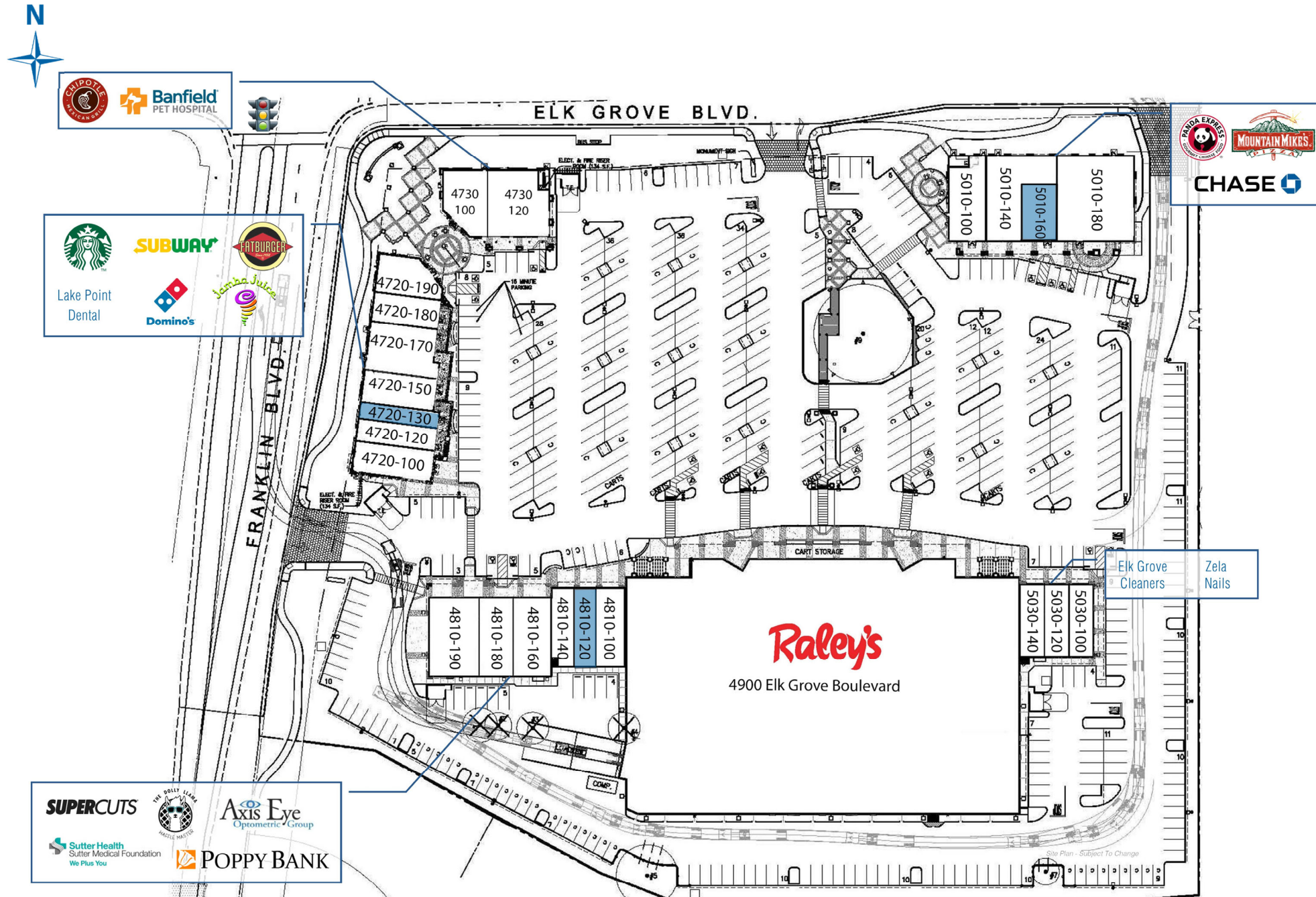
GALLELLI
REAL ESTATE

RALEY'S CENTER OF ELK GROVE

SEC Elk Grove Boulevard & Franklin Boulevard - Elk Grove, CA

A proud member of
CHAINLINKS
RETAIL ADVISORS

SITE PLAN



SUITE	TENANT	SQ. FT.
4720-100	Starbucks	1,500
4720-120	Subway	1,200
4720-130	AVAILABLE	869
4720-150	Fat Burger	1,484
4720-170	Lake Point Dental	2,384
4720-180	Domino's	1,305
4720-190	Jamba Juice	1,500
4730-100	Chipotle	1,901
4730-120	Banfield Pet Hospital	2,550
4810-100	Supercuts	1,360
4810-120	AVAILABLE	1,310
4810-140	The Dolly Llama Waffle Master	1,172
4810-160	Axis Eye Optometric Group	2,000
4810-180	Sutter Medical Foundation	1,800
4810-190	Poppy Bank	2,683
4900	Raley's	64,705
5010-100	Panda Express	2,000
5010-140	Mountain Mike's Pizza	3,144
5010-160	AVAILABLE	893
5010-180	Chase Bank	4,400
5030-100	Elk Grove Cleaners	1,200
5030-120	Zela Nails	1,200
5030-140	Personal Express Insurance	1,200

For leasing information,
please contact:

Kevin Soares
CA DRE 01291491
ksoares@GallelliRE.com

Jeff Hagan
CA DRE #01494218
jhagan@GallelliRE.com

Gallelli Real Estate
3005 Douglas Blvd., Suite 200
Roseville, CA 95661
P 916 772 1700
www.GallelliRE.com
Gary B. Gallelli, Broker
CA DRE #00811881

RALEY'S CENTER OF ELK GROVE

INTERSECTION AERIAL

A PROUD MEMBER OF
CHAINLINKS
RETAIL ADVISORS



Kevin Soares
Executive Vice President
CA DRE #01291491
ksoares@GallelliRE.com

Jeff Hagan
Senior Vice President
CA DRE #01494218
jhagan@GallelliRE.com

Gallelli Real Estate
3005 Douglas Blvd., Suite 200
Roseville, CA 95661
P 916 772 1700
www.GallelliRE.com
Gary B. Gallelli, Broker
CA DRE #00811881



Licensed as Real Estate Salespersons by the CA DRE. The information contained herein has been obtained from sources we deem reliable. While we have no reason to doubt its accuracy, we do not guarantee it.
© Gallelli Real Estate. All Rights Reserved.



RALEY'S CENTER OF ELK GROVE

IMMEDIATE VICINITY RETAIL AERIAL

A PROUD MEMBER OF
CHAINLINKS
RETAIL ADVISORS



Kevin Soares
Executive Vice President
CA DRE #01291491
ksoares@GallelliRE.com

Jeff Hagan
Senior Vice President
CA DRE #01494218
jhagan@GallelliRE.com

Gallelli Real Estate
3005 Douglas Blvd., Suite 200
Roseville, CA 95661
P 916 772 1700
www.GallelliRE.com
Gary B. Gallelli, Broker
CA DRE #00811881



Licensed as Real Estate Salespersons by the CA DRE. The information contained herein has been obtained from sources we deem reliable. While we have no reason to doubt its accuracy, we do not guarantee it.
© Gallelli Real Estate. All Rights Reserved.