

# CHICO CROSSROADS

SEC East 20th St & Dr. Martin Luther King Jr Pkwy at Highway 99 - Chico, CA



Kevin Soares  
Executive Vice President  
CA DRE #01291491  
ksoares@GallelliRE.com

Jeff Hagan  
Senior Vice President  
CA DRE #01494218  
jhagan@GallelliRE.com

Gallelli Real Estate  
3005 Douglas Blvd., Suite 200  
Roseville, CA 95661  
P 916 772 1700  
www.GallelliRE.com  
Gary B. Gallelli, Broker  
CA DRE #00811881



Licensed as Real Estate Salespersons by the CA DRE. The information contained herein has been obtained from sources we deem reliable. While we have no reason to doubt its accuracy, we do not guarantee it. © Gallelli Real Estate. All Rights Reserved.



# CHICO CROSSROADS

## PROPERTY HIGHLIGHTS & DEMOGRAPHICS

A PROUD MEMBER OF  
**CHAINLINKS**  
RETAIL ADVISORS

**location:** SEC E 20th Street and Dr. Martin Luther King Parkway  
Chico, CA

**anchor tenants:** Foodmaxx, Barnes & Noble, Cost Plus World Market, Michaels, Office Depot, REI

**shopping center GLA:** ±264,335 Square Feet (GLA)

**availability:** ±38,250 SF Anchor Space  
±4,800 SF Pad Space  
±1,500 SF Inline Space  
±6,066 SF & ±13,319 SF Warehouse/  
Storage Space



### 2024 total population

1-mile	10,739
3-mile	69,601
5-mile	104,716



### 2024 daytime population

1-mile	16,000
3-mile	75,863
5-mile	108,959



### 2024 total employees

1-mile	6,669
3-mile	36,491
5-mile	48,450



### 2024 total households

1-mile	4,492
3-mile	29,779
5-mile	45,154



### 2024 average HH income

1-mile	\$88,325
3-mile	\$101,658
5-mile	\$108,548



### traffic counts

CA Hwy 99 (south of E. 20th St)	77,992
E. 20th St (south of Hwy 99)	19,024



Notable Retailers in Close Proximity Include:



Kevin Soares  
Executive Vice President  
CA DRE #01291491  
ksoares@GallelliRE.com

Jeff Hagan  
Senior Vice President  
CA DRE #01494218  
jhagan@GallelliRE.com

Gallelli Real Estate  
3005 Douglas Blvd., Suite 200  
Roseville, CA 95661  
P 916 772 1700  
www.GallelliRE.com  
Gary B. Gallelli, Broker  
CA DRE #00811881



Licensed as Real Estate Salespersons by the CA DRE. The information contained herein has been obtained from sources we deem reliable. While we have no reason to doubt its accuracy, we do not guarantee it. © Gallelli Real Estate. All Rights Reserved.



# CHICO CROSSROADS

## PROPERTY OVERVIEW

A PROUD MEMBER OF  
**CHAINLINKS**  
RETAIL ADVISORS

Situated at the southeast corner of E. 20th Street and Dr. Martin Luther King Jr Parkway along Highway 99, **Chico Crossroads** is part of the retail epicenter of the Chico region.

Visible to nearly 98,000 cars per day, the  $\pm 264,335$  square foot community center is anchored by Foodmaxx, Michaels, Office Depot, Barnes & Noble, Cost Plus World Market and coming soon REI.

The City of Chico's sphere of influence encompasses a 34-square mile area with a total population of  $\pm 99,369$  in the incorporated area. Chico's population and housing growth continues to be among the highest in Butte County.

Notable traffic generators in the market include California State University Chico ( $\pm 14,581$  total students), and Butte College ( $\pm 15,000$  total students). Major employers in Chico include Enloe Medical Center (3,563 employees), CSU Chico (1,106 employees) and the Chico Unified School District (1,494 employees).



Kevin Soares  
Executive Vice President  
CA DRE #01291491  
ksoares@GallelliRE.com

Jeff Hagan  
Senior Vice President  
CA DRE #01494218  
jhagan@GallelliRE.com

Gallelli Real Estate  
3005 Douglas Blvd., Suite 200  
Roseville, CA 95661  
P 916 772 1700  
www.GallelliRE.com  
Gary B. Gallelli, Broker  
CA DRE #00811881



Licensed as Real Estate Salespersons by the CA DRE. The information contained herein has been obtained from sources we deem reliable. While we have no reason to doubt its accuracy, we do not guarantee it. © Gallelli Real Estate. All Rights Reserved.



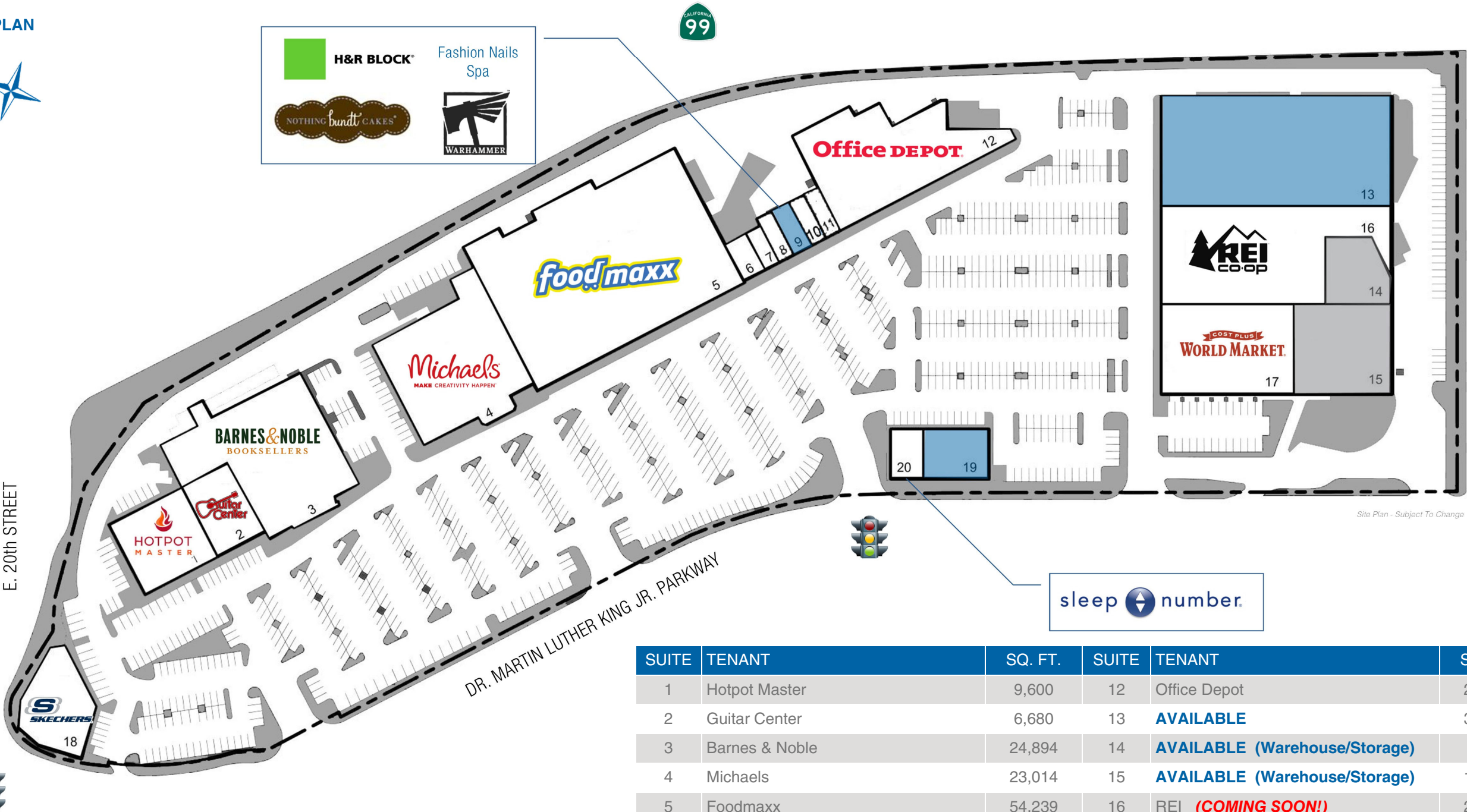


# CHICO CROSSROADS

SEC East 20th Street & Dr. Martin Luther King Jr. Parkway at Highway 99 - Chico, CA

A proud member of  
**CHAINLINKS**  
RETAIL ADVISORS

## SITE PLAN



SUITE	TENANT	SQ. FT.	SUITE	TENANT	SQ. FT.
1	Hotpot Master	9,600	12	Office Depot	22,000
2	Guitar Center	6,680	13	AVAILABLE	38,250
3	Barnes & Noble	24,894	14	AVAILABLE (Warehouse/Storage)	6,066
4	Michaels	23,014	15	AVAILABLE (Warehouse/Storage)	13,319
5	Foodmaxx	54,239	16	REI (COMING SOON!)	25,002
6	H&R Block	1,500	17	Cost Plus World Market	17,873
7	Fashion Nails Spa	1,000	18	Skechers (COMING SOON!)	8,598
8	Warhammer	1,200	19	AVAILABLE	4,800
9	AVAILABLE	1,500	20	Sleep Number	2,400
10/11	Nothing Bundt Cakes	2,400			

For leasing information,  
please contact:

**Kevin Soares**  
CA DRE #01291491  
ksoares@GallelliRE.com

**Jeff Hagan**  
CA DRE #01494218  
jhagan@GallelliRE.com

**Gallelli Real Estate**  
3005 Douglas Blvd., Suite 200  
Roseville, CA 95661  
P 916 772 1700  
www.GallelliRE.com  
Gary B. Gallelli, Broker  
CA DRE #00811881

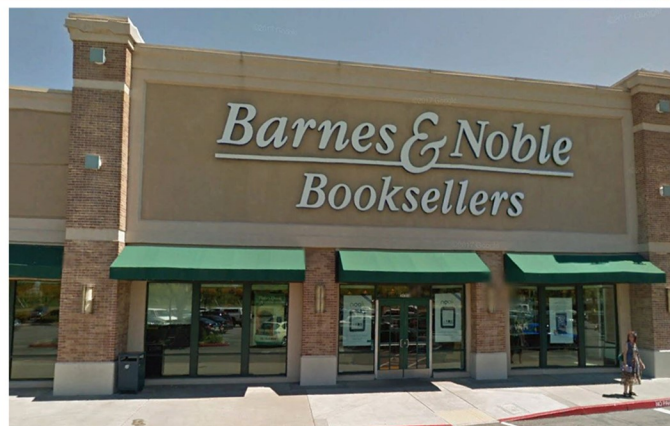




# CHICO CROSSROADS

## SHOPPING CENTER PHOTOS

A PROUD MEMBER OF  
**CHAINLINKS**  
RETAIL ADVISORS



**KIMCO**  
REALTY  
*more than shopping*  
EVERYDAY LIVING™

Kevin Soares  
Executive Vice President  
CA DRE #01291491  
ksoares@GallelliRE.com

Jeff Hagan  
Senior Vice President  
CA DRE #01494218  
jhagan@GallelliRE.com

Gallelli Real Estate  
3005 Douglas Blvd., Suite 200  
Roseville, CA 95661  
P 916 772 1700  
www.GallelliRE.com  
Gary B. Gallelli, Broker  
CA DRE #00811881

**GALLELLI**  
REAL ESTATE

Licensed as Real Estate Salespersons by the CA DRE. The information contained herein has been obtained from sources we deem reliable. While we have no reason to doubt its accuracy, we do not guarantee it. © Gallelli Real Estate. All Rights Reserved.





# CHICO CROSSROADS

## RETAIL AERIAL

A PROUD MEMBER OF  
**CHAINLINKS**  
RETAIL ADVISORS



**KIMCO**  
REALTY  
*more than shopping*  
EVERYDAY LIVING™

Kevin Soares  
Executive Vice President  
CA DRE #01291491  
ksoares@GallelliRE.com

Jeff Hagan  
Senior Vice President  
CA DRE #01494218  
jhagan@GallelliRE.com

Gallelli Real Estate  
3005 Douglas Blvd., Suite 200  
Roseville, CA 95661  
P 916 772 1700  
www.GallelliRE.com  
Gary B. Gallelli, Broker  
CA DRE #00811881

**GALLELLI**  
REAL ESTATE

Licensed as Real Estate Salespersons by the CA DRE. The information contained herein has been obtained from sources we deem reliable. While we have no reason to doubt its accuracy, we do not guarantee it. © Gallelli Real Estate. All Rights Reserved.

