

1512 NORTH H STREET

Mission Plaza - NEC CA Route 1 (Cabrillo Hwy) & E. Central Avenue - Lompoc, CA

A PROUD MEMBER OF
CHAINLINKS
RETAIL ADVISORS



Phillip Kyle
Senior Vice President
CA DRE #01229165
pkyle@GallellIRE.com

Gallelli Real Estate
P 805 892 6237
www.GallellIRE.com



GALLELLI
REAL ESTATE

Licensed as Real Estate Salespersons by the CA DRE. The information contained herein has been obtained from sources we deem reliable. While we have no reason to doubt its accuracy, we do not guarantee it. © Gallelli Real Estate. All Rights Reserved.



1512 NORTH H STREET

PROPERTY HIGHLIGHTS & DEMOGRAPHICS

A PROUD MEMBER OF
CHAINLINKS
RETAIL ADVISORS

location: NEC CA Route 1 (Cabrillo Hwy) & E. Central Ave
Lompoc, CA

notable tenants in center: Albertson's, Big 5 Sporting Goods, Ross

shopping center GLA: ±164,494 Square Feet (GLA)

availability: ±1,200 SF Inline Retail Spaces

asking rent & NNN charges: \$2.25 psf, \$0.35 psf NNN (1,200 SF)



2023 total population

1-mile	14,345
3-mile	48,178
5-mile	54,820



2023 daytime population

1-mile	12,615
3-mile	39,011
5-mile	44,677



2023 total employees

1-mile	4,235
3-mile	11,306
5-mile	12,220



2023 total households

1-mile	4,838
3-mile	16,191
5-mile	18,213



2023 average HH income

1-mile	\$88,768
3-mile	\$90,653
5-mile	\$95,248



traffic counts

CA Route 1 (at W Central Ave)	±27,100 AADT
W Central Ave (at CA Route 1)	17,450 ADT



Notable Tenants within Close Proximity



Phillip Kyle
Senior Vice President
CA DRE #01229165
pkyle@GallelliRE.com

Gallelli Real Estate
P 805 892 6237
www.GallelliRE.com



GALLELLI
REAL ESTATE



1512 NORTH H STREET

PROPERTY OVERVIEW

A PROUD MEMBER OF
CHAINLINKS
RETAIL ADVISORS

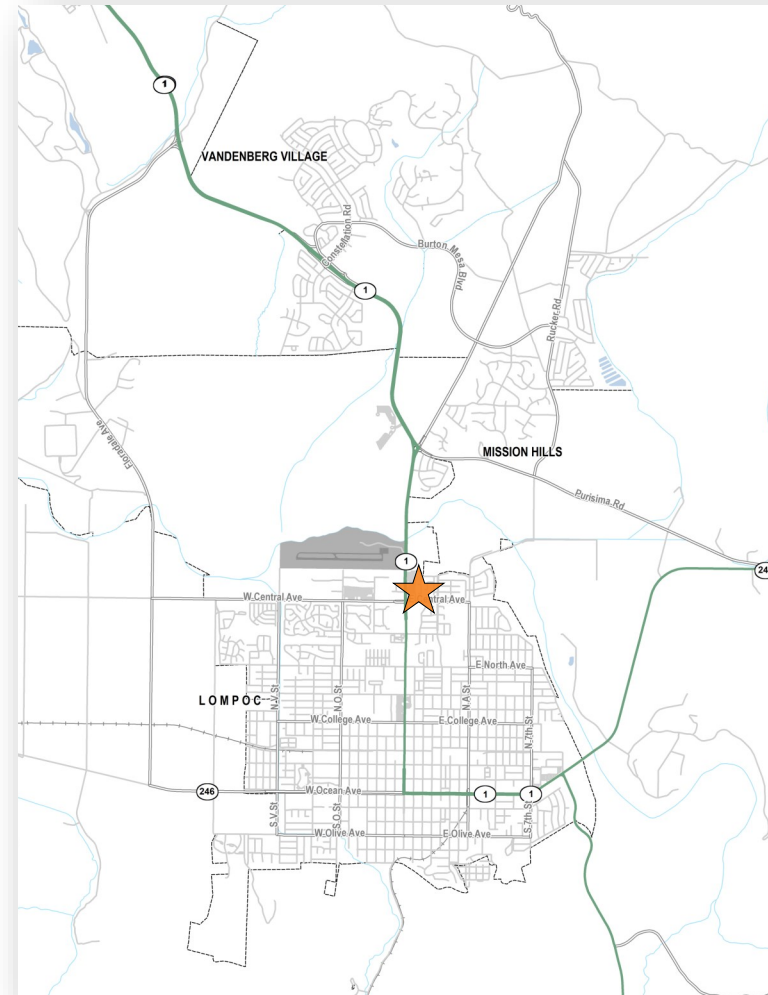
1512 North H Street is a part of the Mission Plaza Shopping Center, a ±164,494 square foot community center located at the northeast corner of Cabrillo Highway (CA Highway 1) and E. Central Avenue in northern Lompoc, California.

Part of more than 1.1 million square feet of commercial retail in the Lompoc trade area, **1512 North H Street** is highly visible and conveniently accessible to more than 34,200 cars per day traveling the intersection.

With more than 721,000 square feet of commercial retail within a 1/2 mile radius, **1512 North H Street** is ideally situated at the densest retail intersection in the overall trade area. Major retailers in the trade area include Walmart Supercenter, Marshalls, Michael's, Petco, Vons, Staples and Home Depot.

With a city population of approximately 42,760 people, the City of Lompoc is just five miles from Vandenberg Air Force Base which employs nearly 6,900 residents. Lompoc's other major employers include Lompoc Unified School District (888 employees), Lompoc Hospital (558 employees) and the US Department of Justice (547 employees).

The winemaking and wine tourism industries have made Lompoc an internationally recognized appellation in Santa Barbara County with more than 30 wineries in the area.



Phillip Kyle
Senior Vice President
CA DRE #01229165
pkyle@GallellIRE.com

Gallelli Real Estate
P 805 892 6237
www.GallellIRE.com



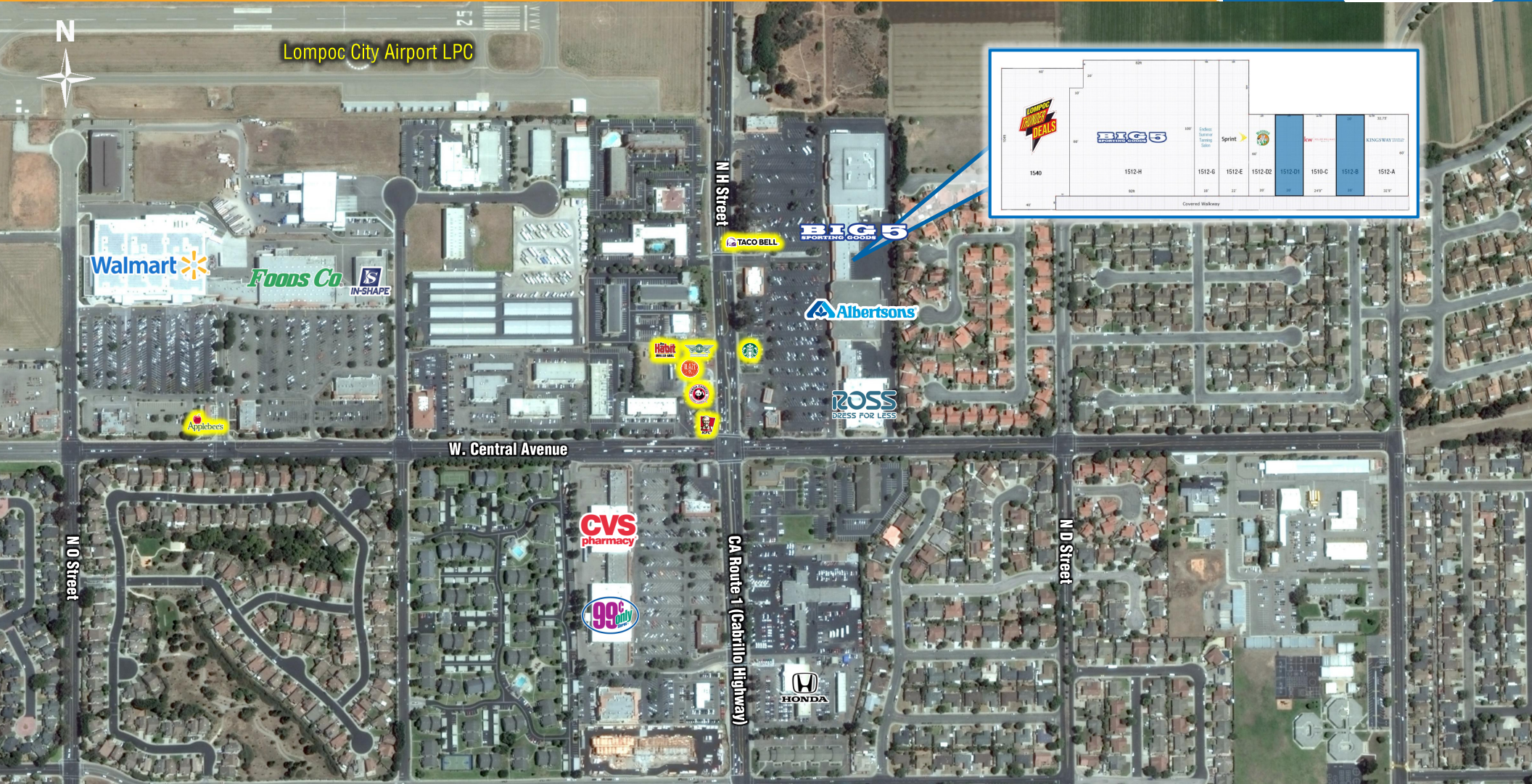
GALLELLI
REAL ESTATE



1512 NORTH H STREET

RETAIL TRADE AREA AERIAL

A PROUD MEMBER OF
CHAINLINKS
RETAIL ADVISORS



Phillip Kyle
Senior Vice President
CA DRE #01229165
pkyle@GallellIRE.com

Gallelli Real Estate
P 805 892 6237
www.GallellIRE.com

